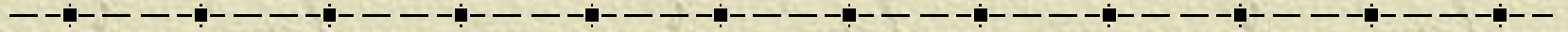


Cases A-kursus 2014

Cases mærket med *:

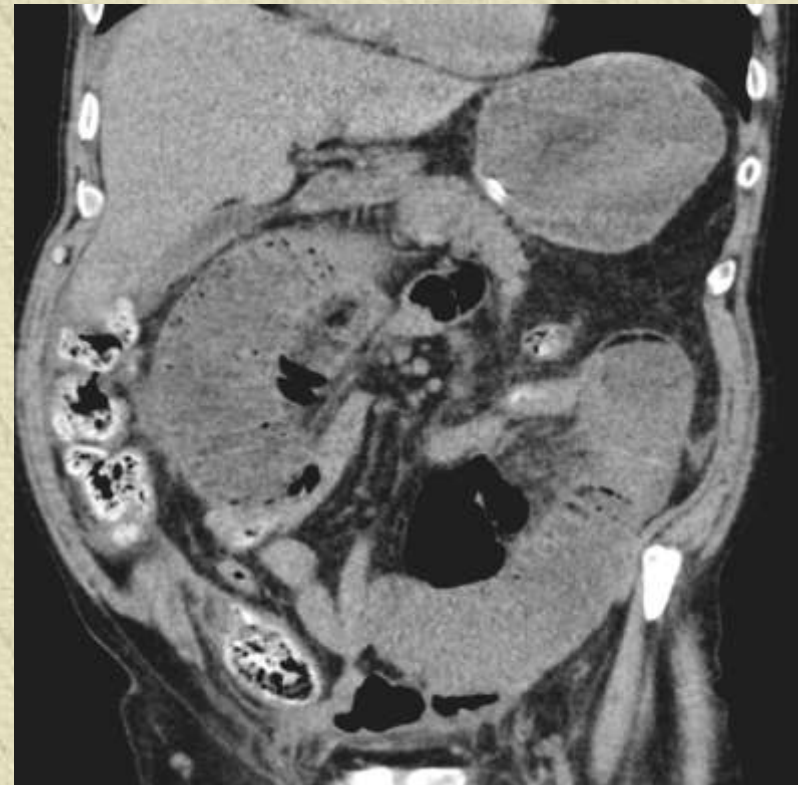
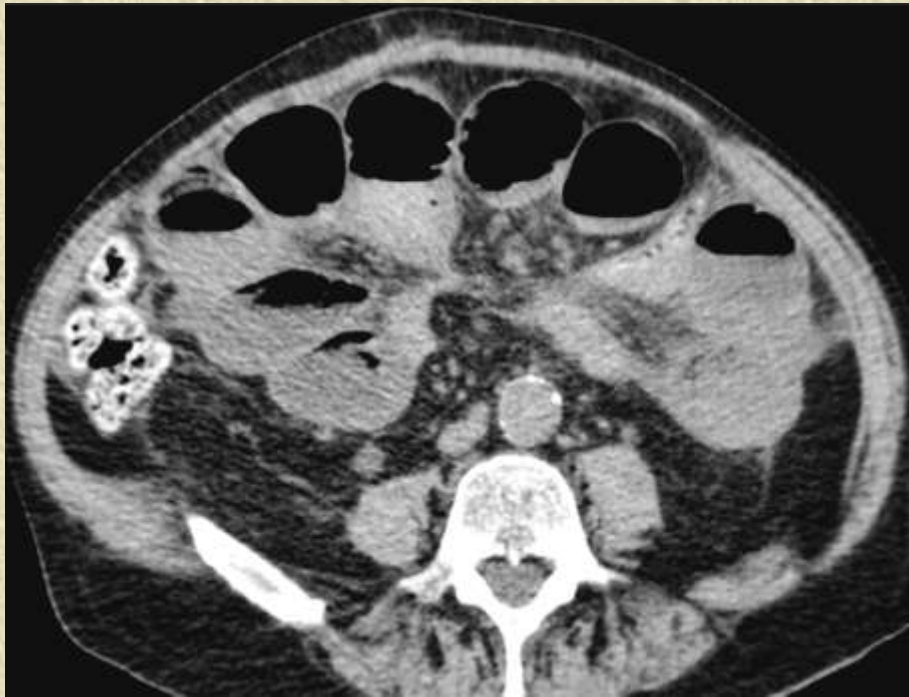
Hele billedserien tilgængelig i
Dropbox

Case 1



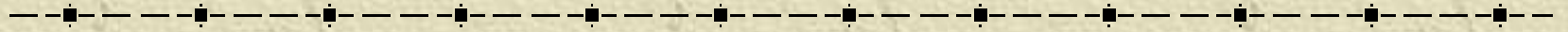
- ✦ 67-årig mand
- ✦ Sigmoidium-opereret for 1½ måned siden
- ✦ Oplæg til CT: Kvalme, opkastninger og stomistop gennem 2 døgn

Case 1



✦ Diagnose? Hvorfor?

Case 2

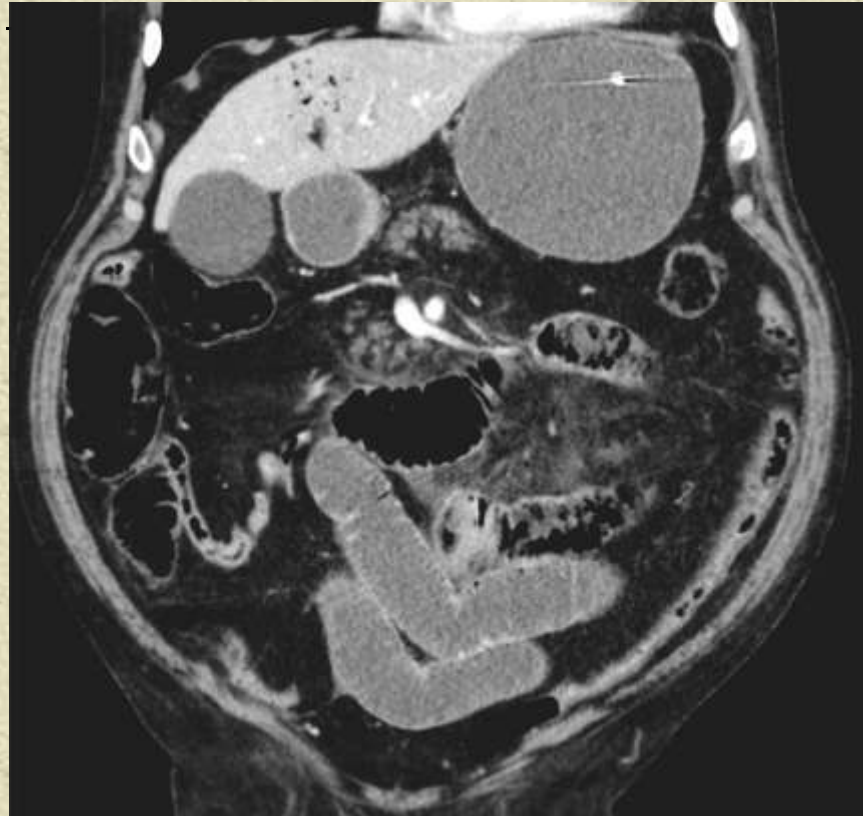


✦ 80-årig mand

✦ Knæalloplastik for 2 uger siden

✦ Oplæg til CT: Obs. ileus

Case 2



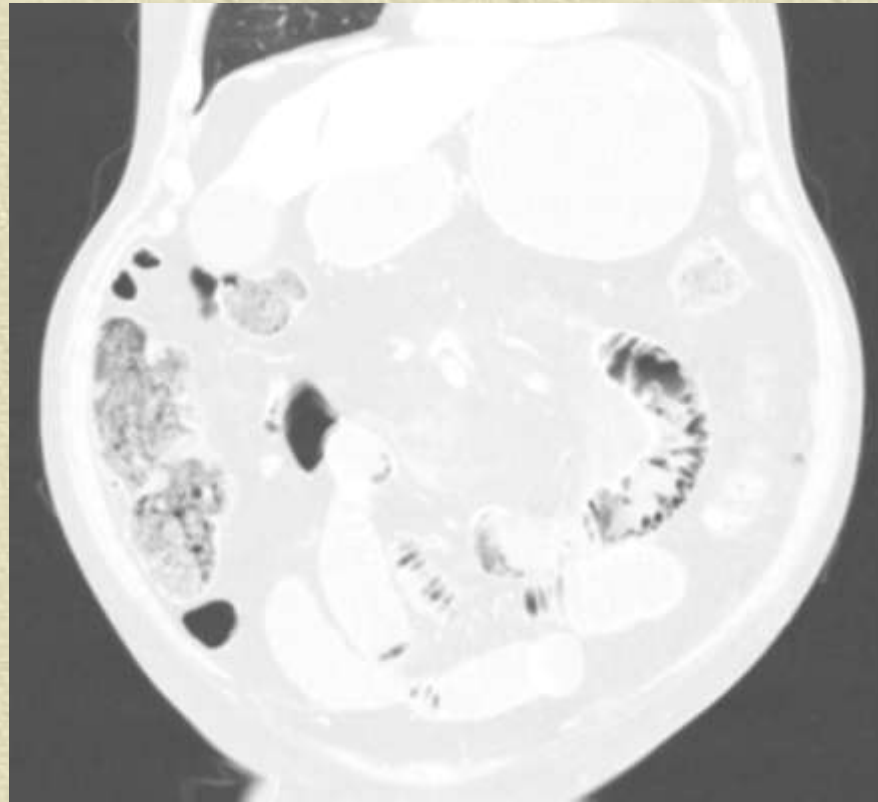
- ✦ Hvad får du ud af dette billede?
- ✦ Kan der være ileus? Evt. komplikationer?

Case 2



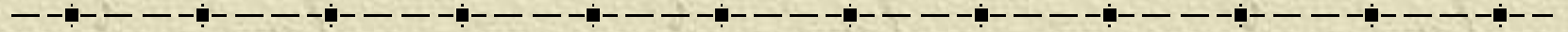
Yderligere billeder
Patologiske fund?

Case 2



✦ Lungevindue

Case 3*



✦ 62-årig mand

✦ 2011 opereret for c. recti (rectum-exstirpation)

✦ Oplæg til CT juni 2013: Obs. ileus

Case 3*



✦ Hvad får du ud af dette billede?

✦ Ileus?

Case 3*



✦ Ileus?

✦ Hvis ja – nævn potentielle årsager til ileus

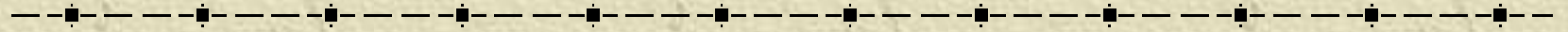
Case 3*



✦ Årsag til ileus?



Case 4*

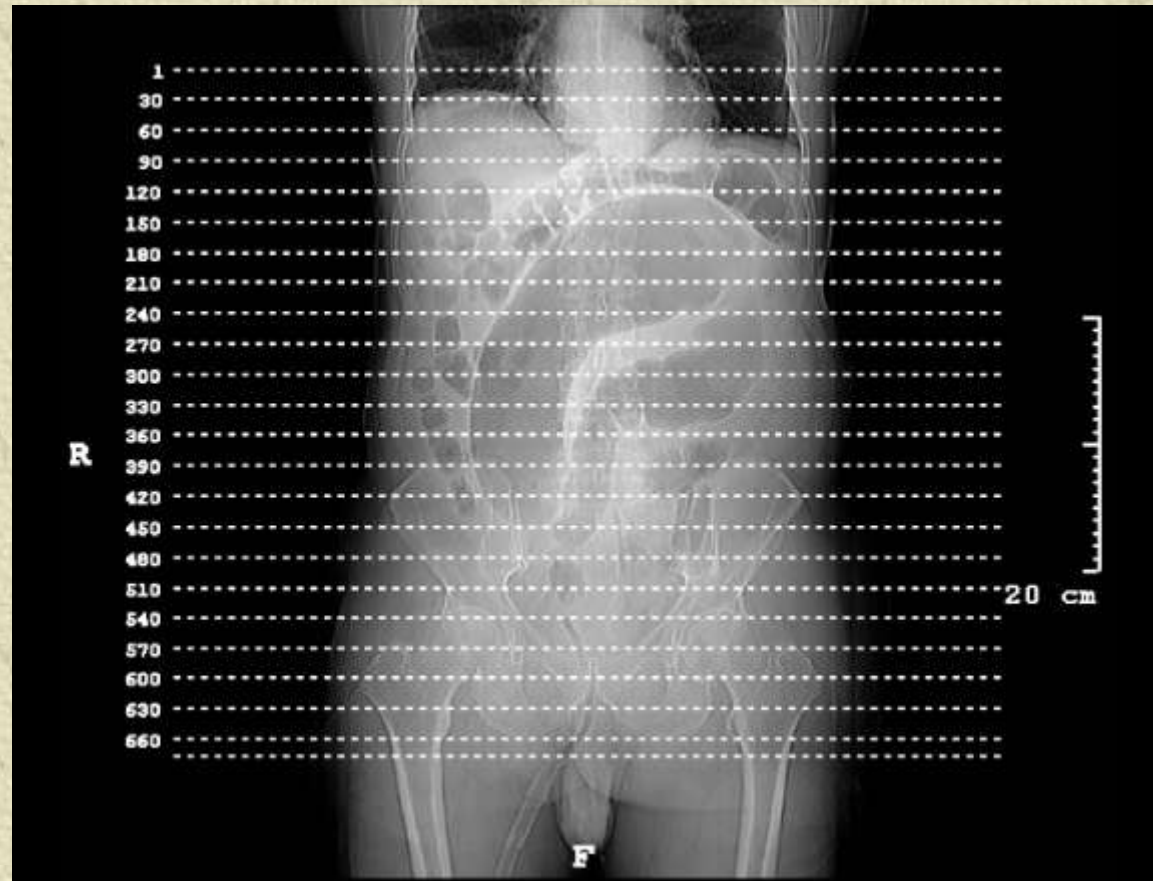


✦ 74-årig mand

✦ Oplæg til CT januar 2014: Opdrevet abdomen

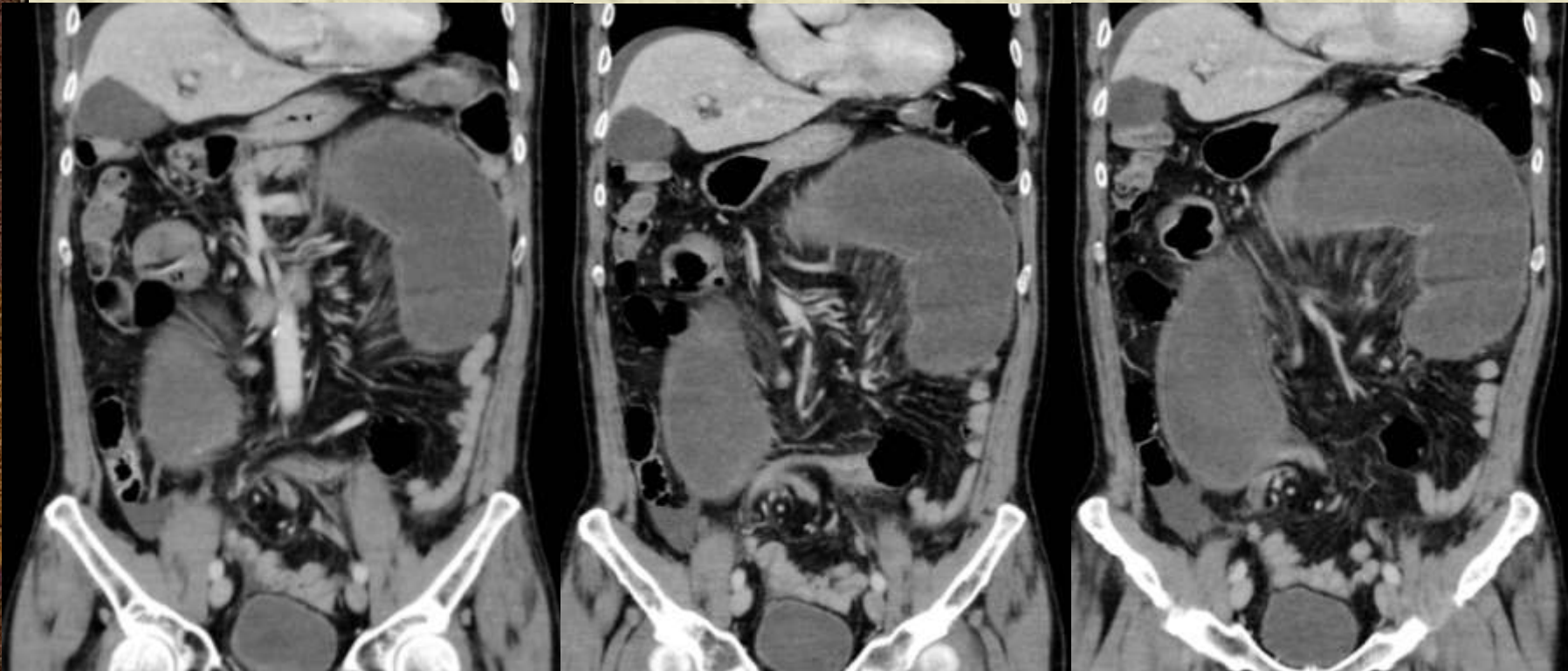
✦ Diagnose?

Case 4*



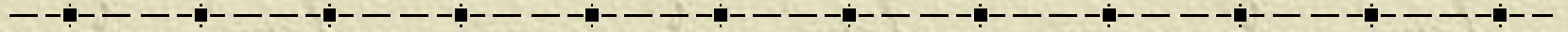
✦ Scanogram: Hvad ser du?

Case 4*



Diagnose-forslag?

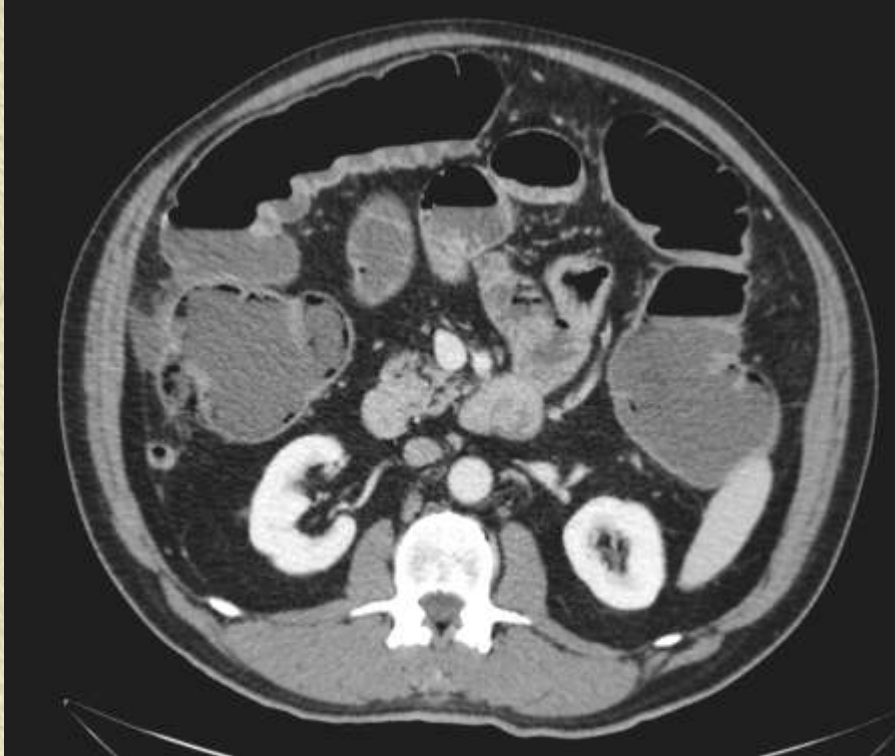
Case 5



✦ 63-årig mand

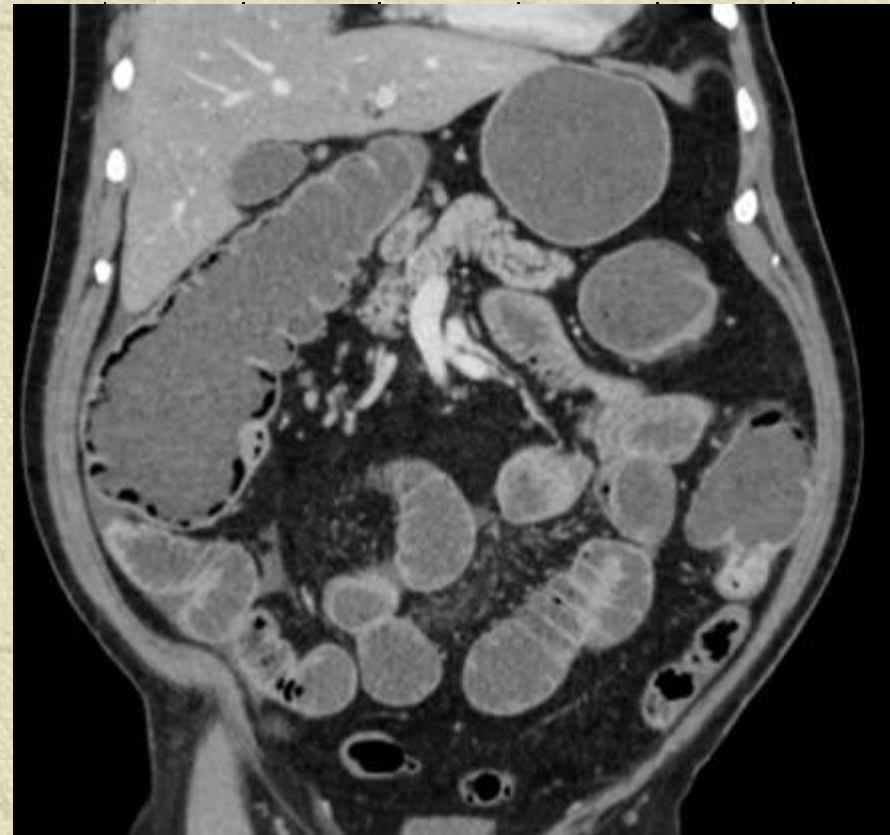
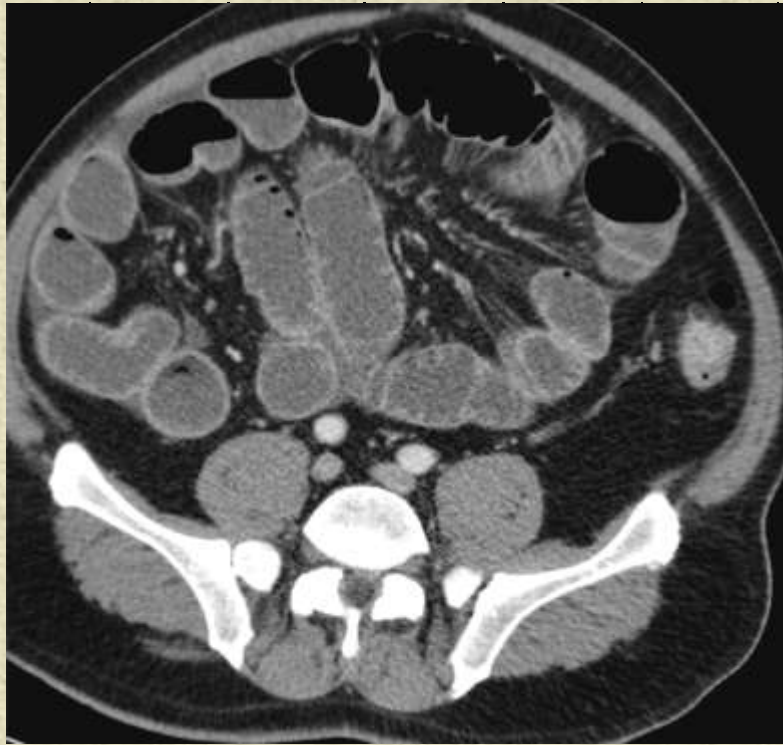
✦ Oplæg til CT april 2013: Obs. Ileus

Case 5



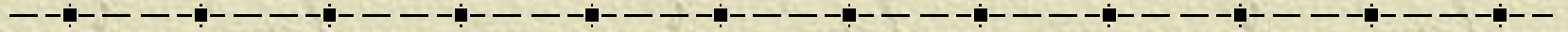
Diagnose?
Bud på årsager

Case 5



✦ Hvad ser du?

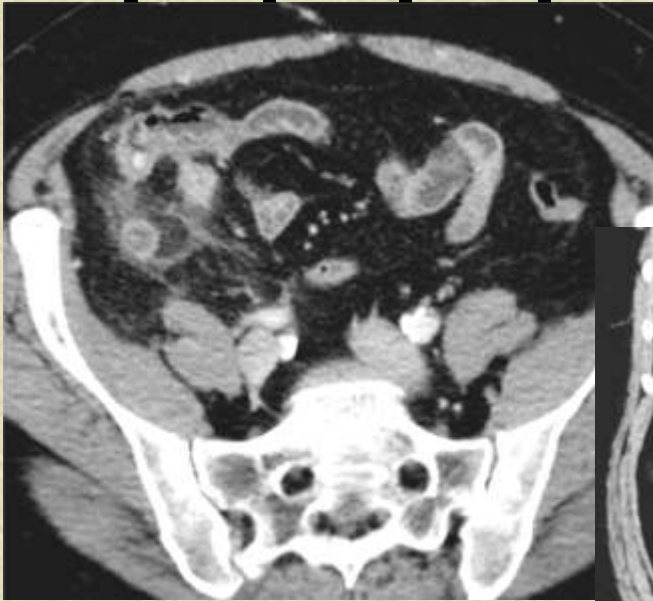
Case 6



✦ 52-årig kvinde

✦ Oplæg til CT april 2013: Smerter i hø. fossa

Case 6



✦ Diagnose?

Case 6

✦ Opereres april 2013

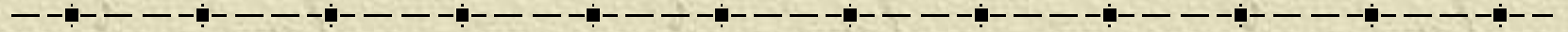
✦ Indlægges november 2013 – oplægget til CT er: obs. ileus

✦ Hvad fejler patienten nu?

Case 6



Case 7



✦ 24-årig mand indlagt i kirurgisk modtageafsnit

✦ Ubehag og smerter i hø. fossa over et stykke tid

Case 7



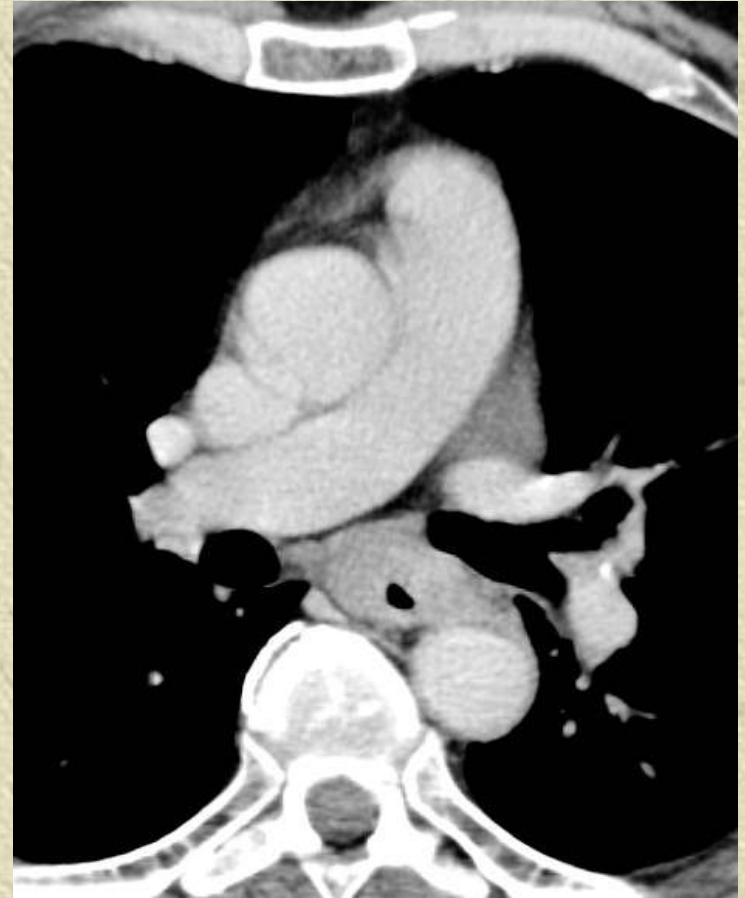
✦ Patologiske fund? Differentialdiagnoser.

Case 7



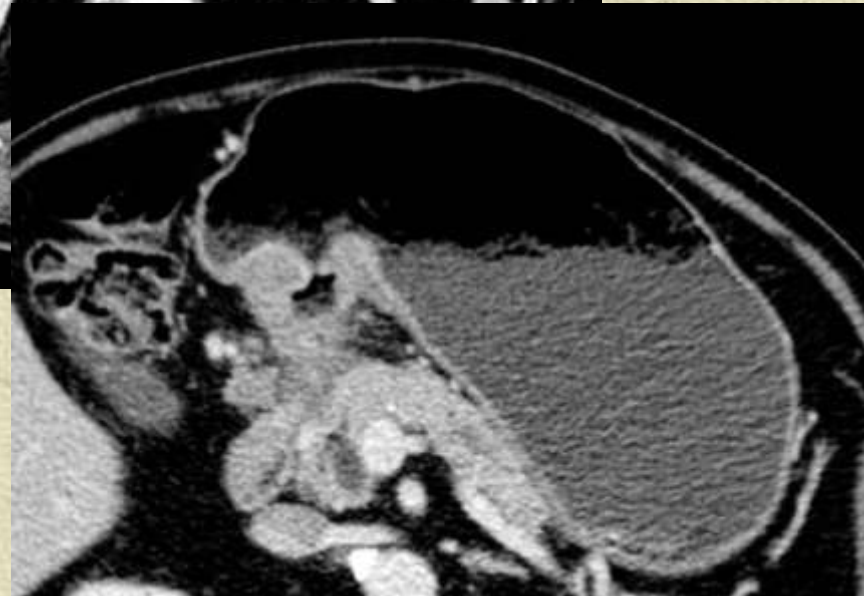
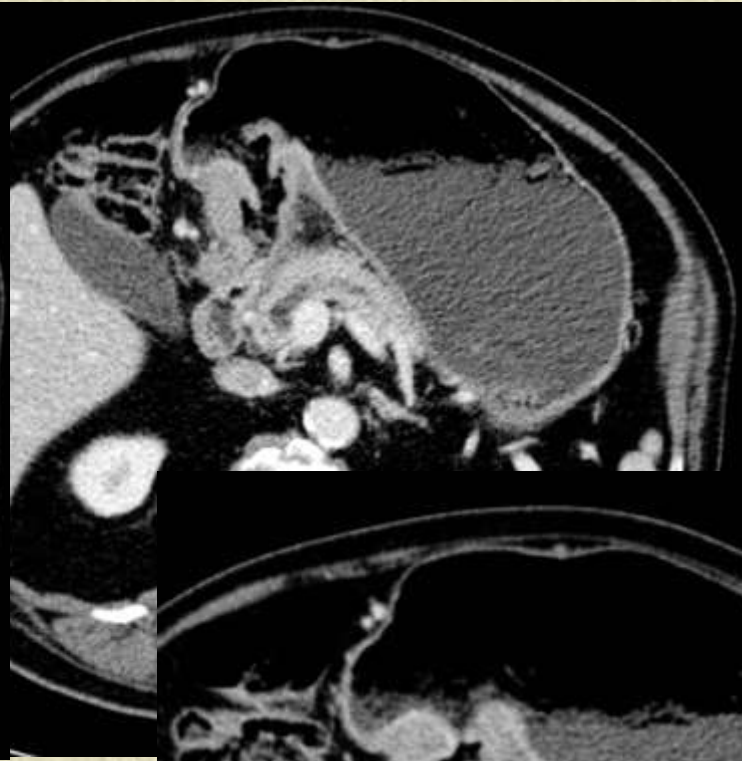
Case 8

Adenokarcinom i esofagus, resektabel?



Case 9

✦ Ved skopi fundet tumor i ventriklen, hvor?



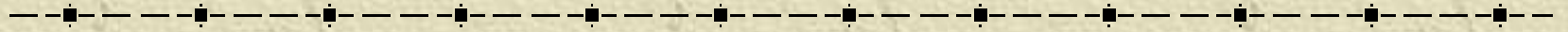
Case 9

Er nogen af disse ventrikler normale ?

Hvad fejler dem, der ikke er ?



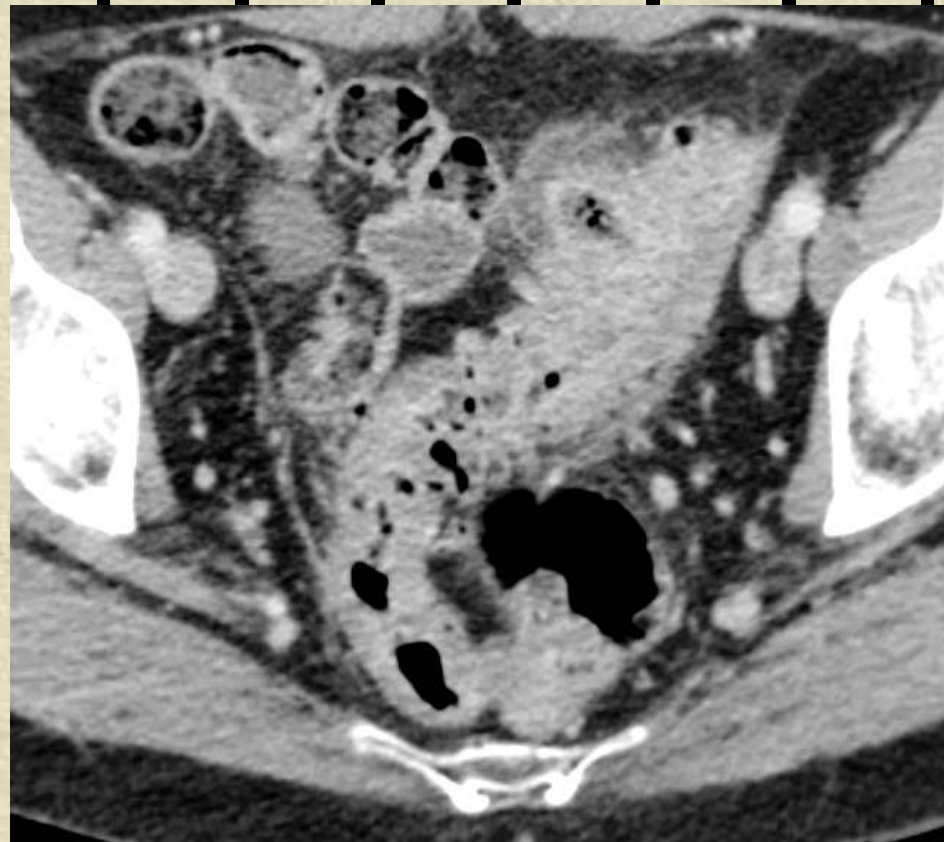
Case 10



✦ 67-årig kvinde

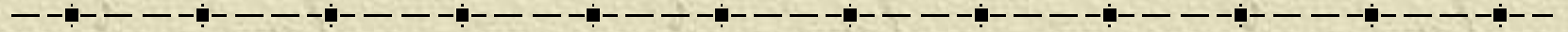
✦ CT-oplæg: Smerter i ve. fossa

Case 10



✦ Diagnose? Og hvorfor?

Case 11*



✦ 63-årig kvinde

✦ Smerter i hø. fossa

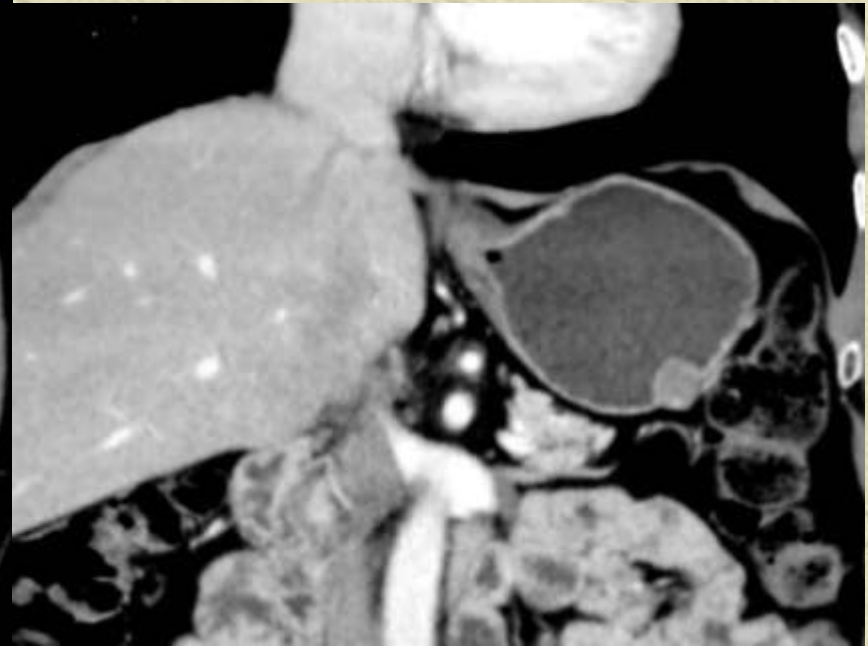
✦ Diagnostiske bud?

Case 11*



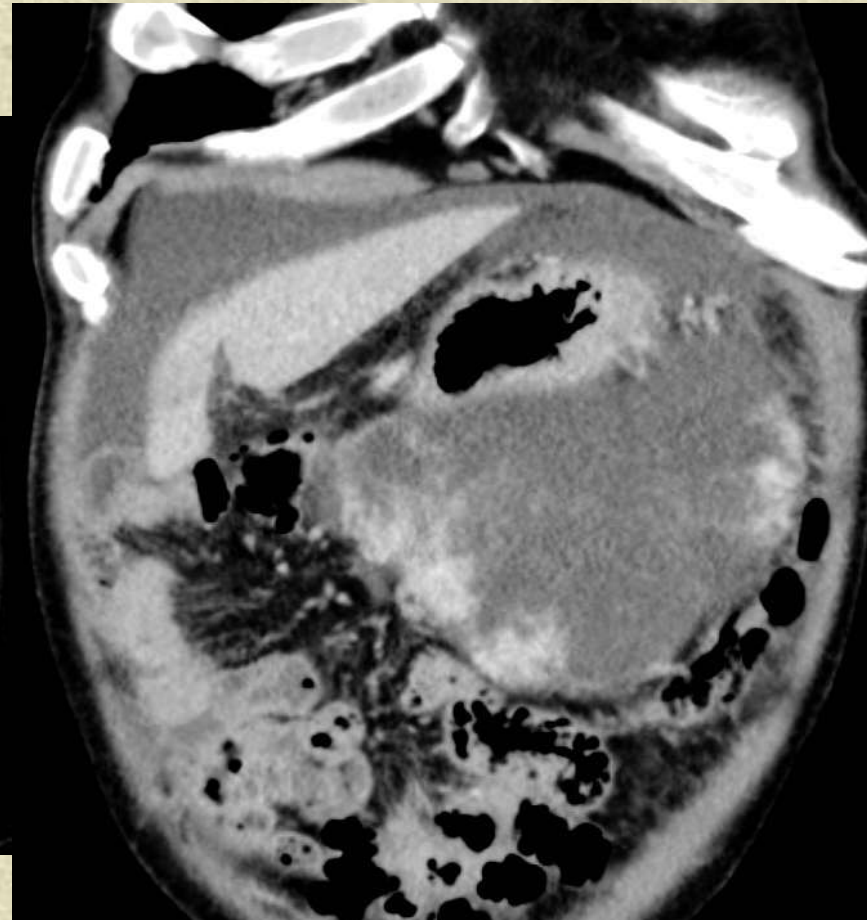
Case 12

✦ Lille ventrikeltumor, hvad tror du det er?



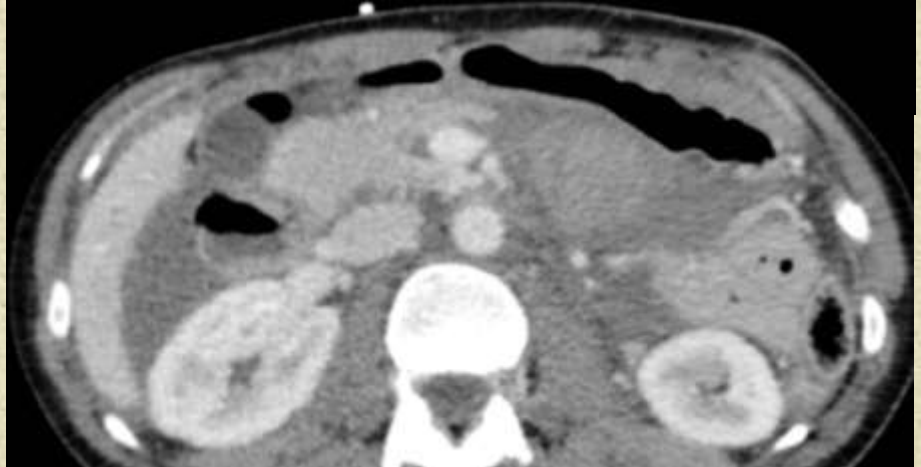
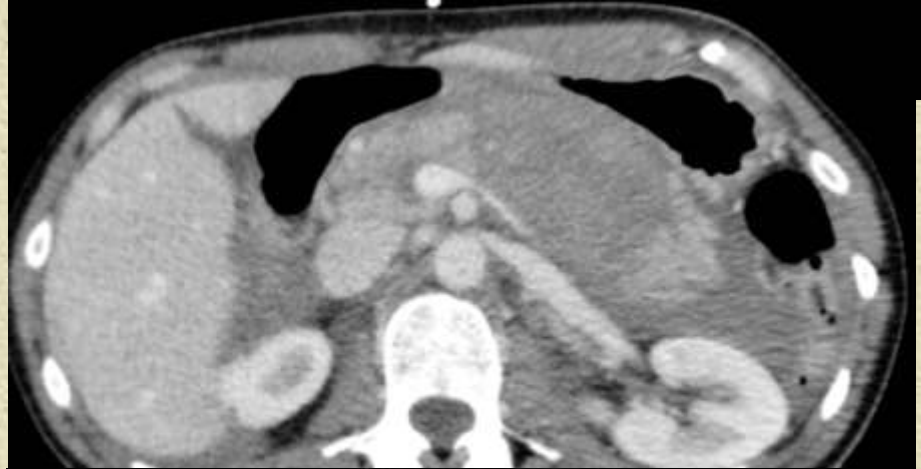
Case 12

✦ Og denne tumor?



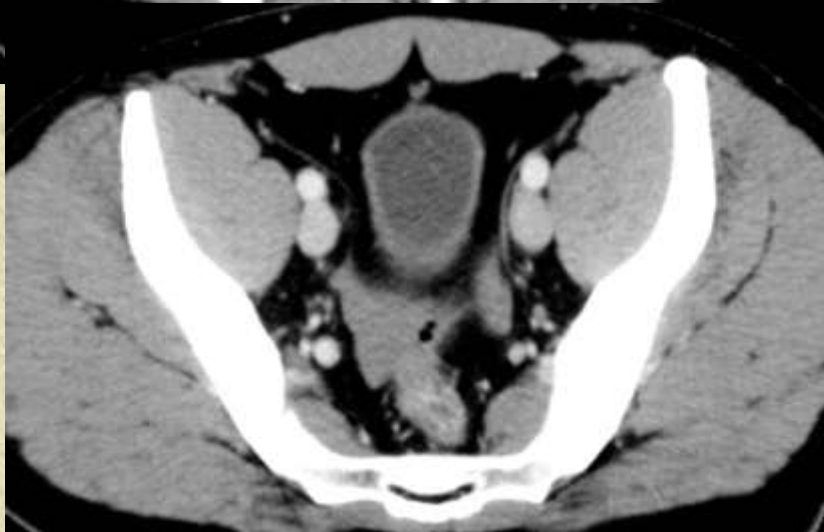
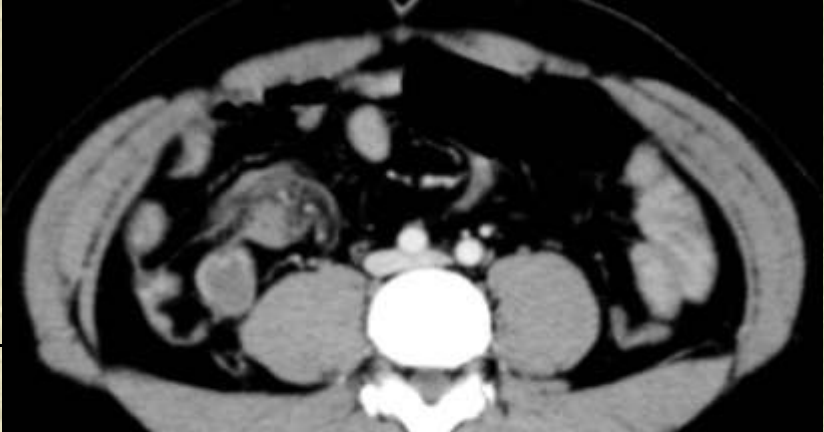
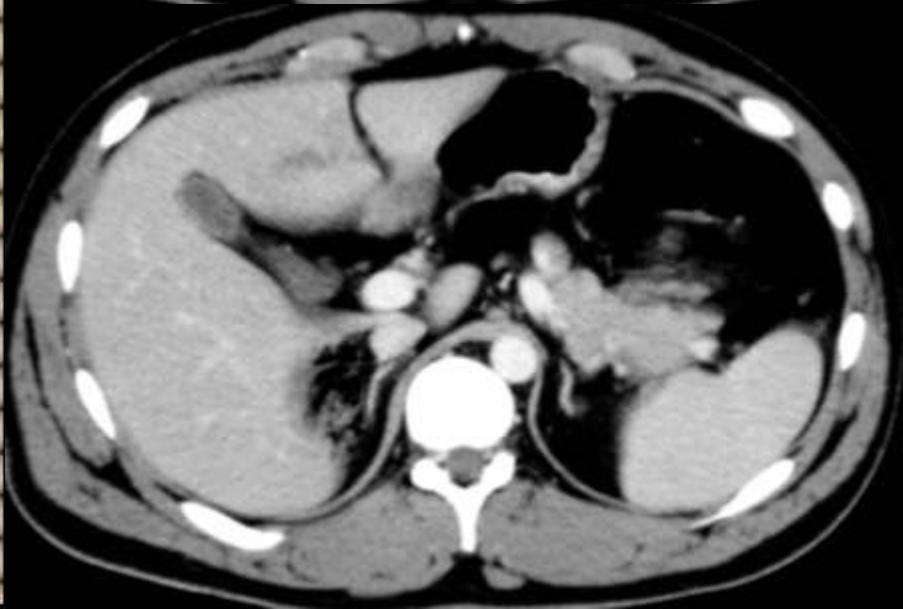
Case 13*

Traume, fået hest ned over sig

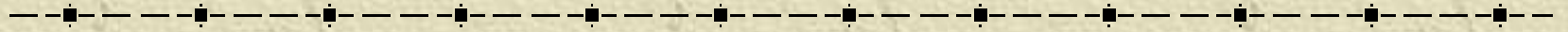


Case 14

Traume CT efter trafikuheld



Case 15*

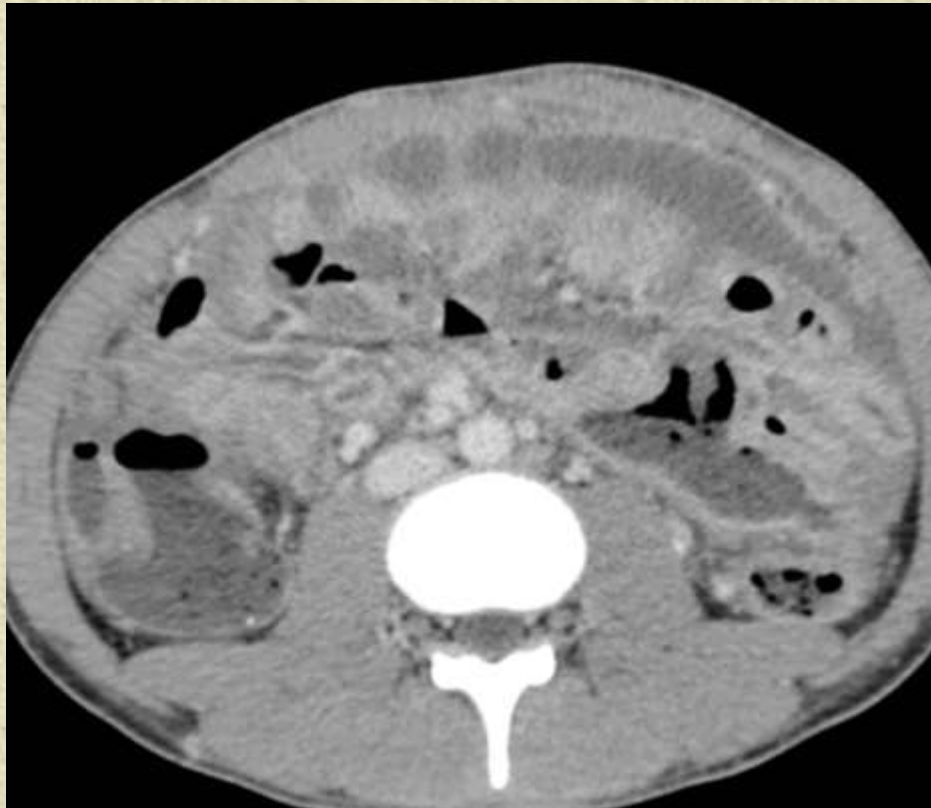


✦ 17-årig mand

✦ Filipiner, boet i Danmark i to år

✦ Tre måneders anamnese med mavesmerter og vægttab

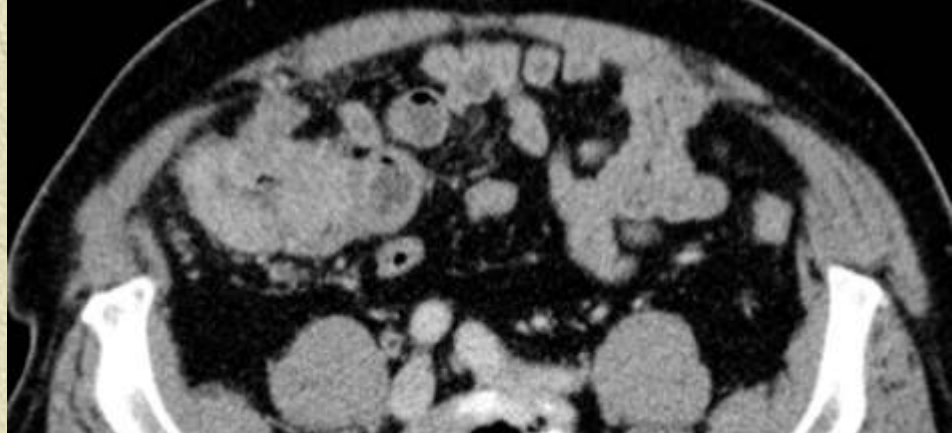
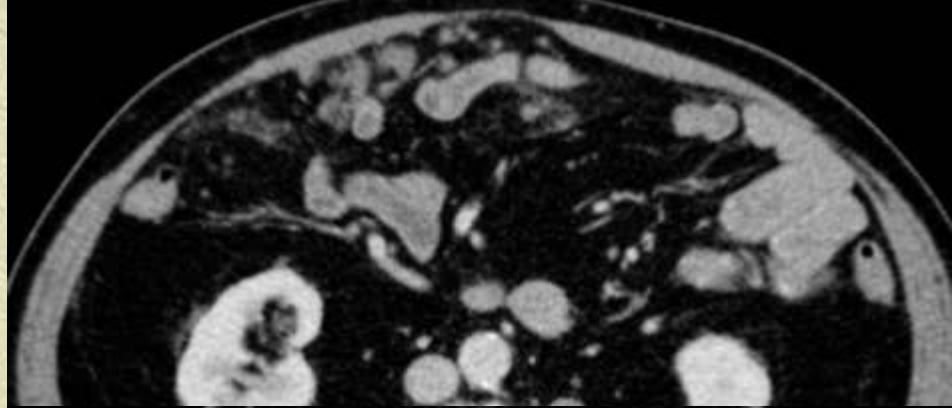
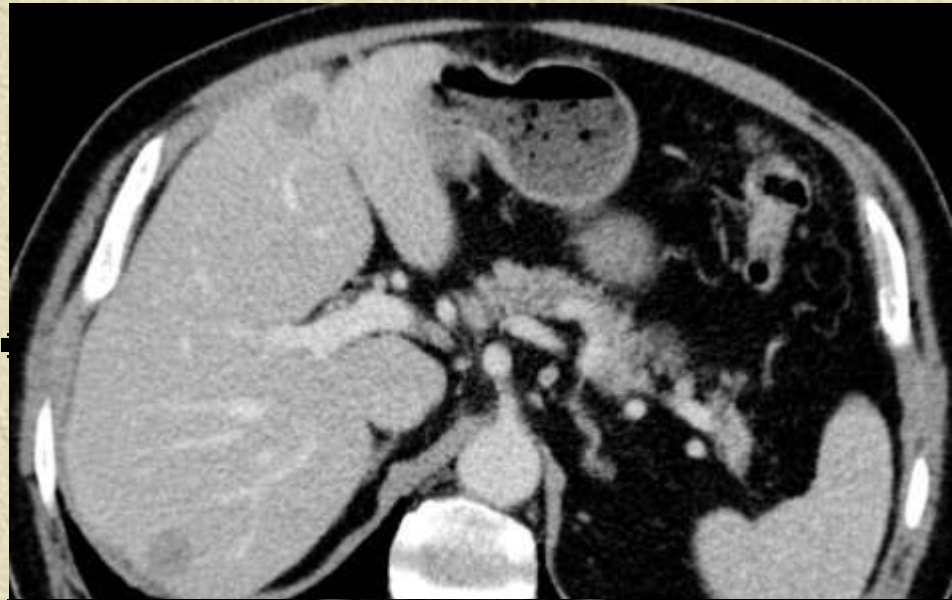
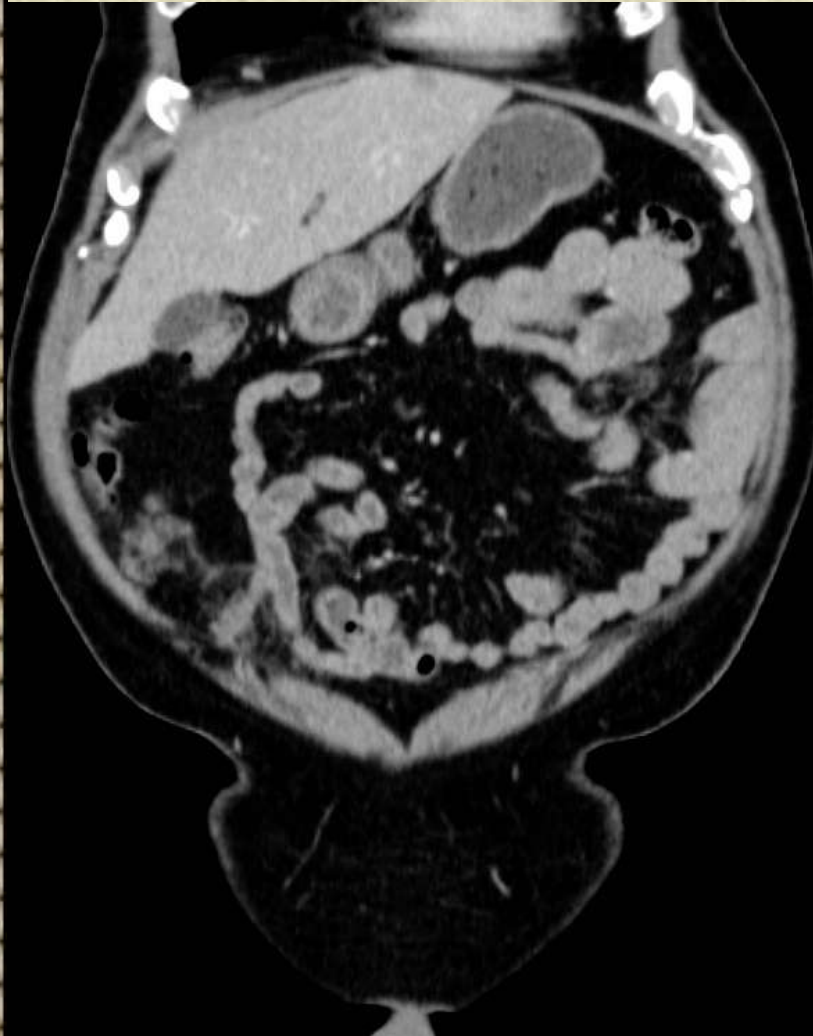
Case 15*



✦ Patologi? Diagnostiske overvejelser

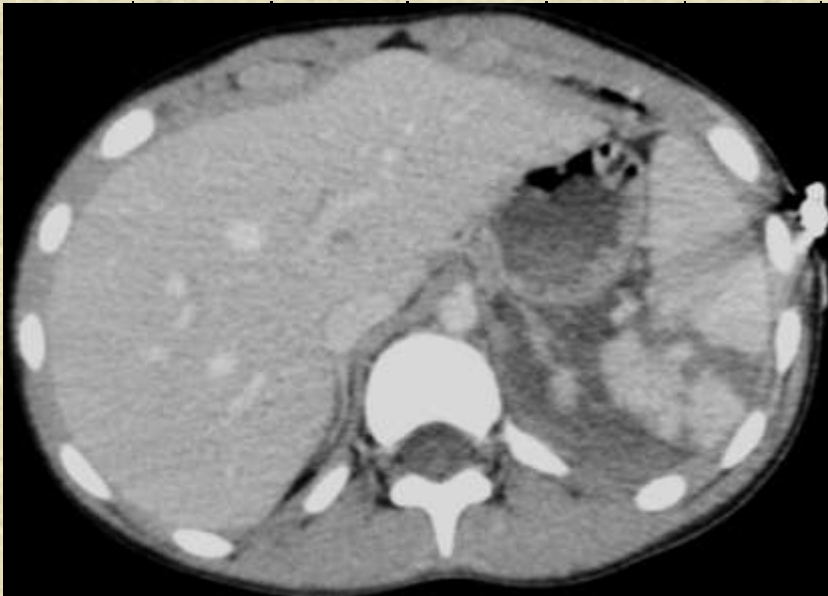
Case 16*

Coecumtumor, præoperativ CT
Spredning?



Case 17

11 årig pige med abd.smerter efter trafikuheld

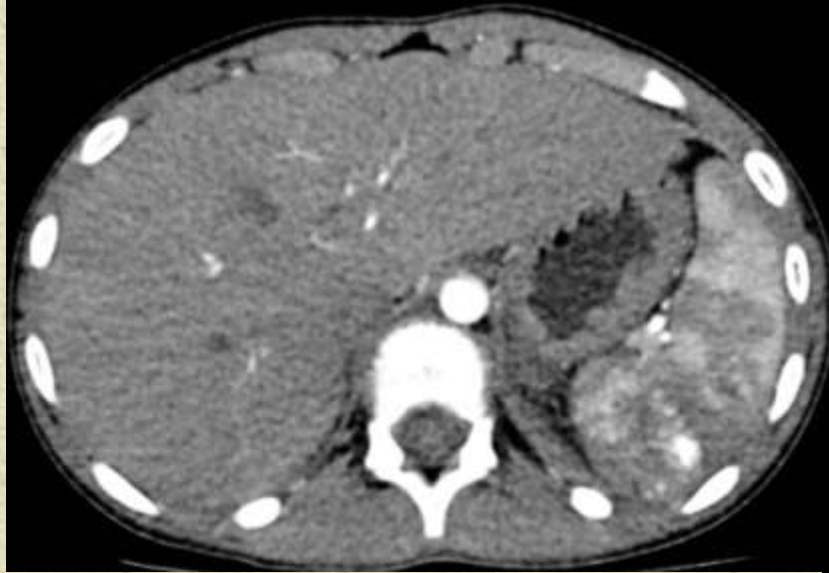


Traume CT, hvor er der
læsion?

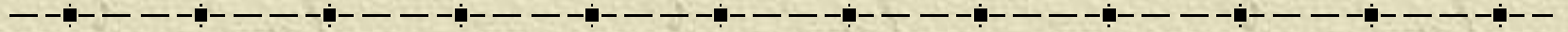
Konservativ behandling?



Case 17 Kontrol efter 5 dage, hvad nu?



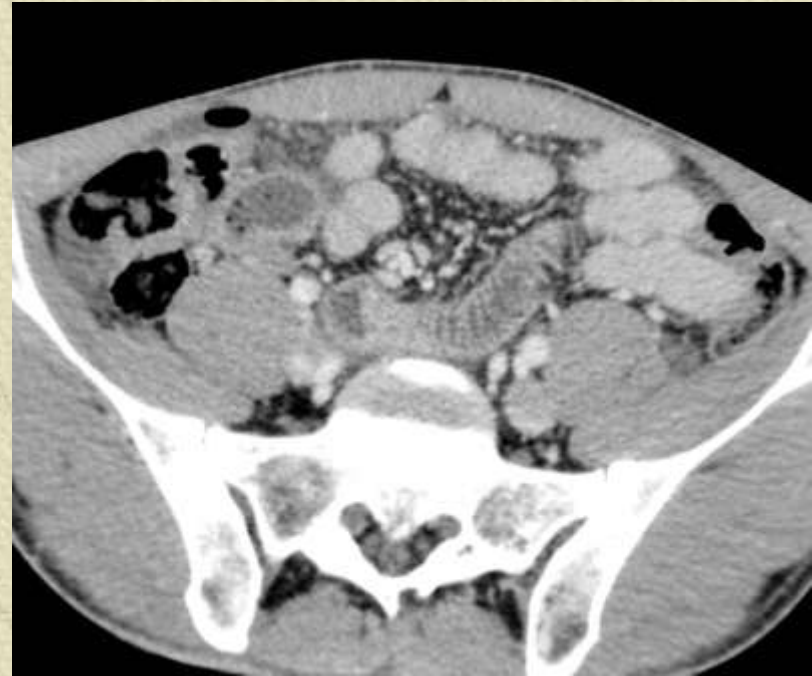
Case 18*



✦ 27-årig mand

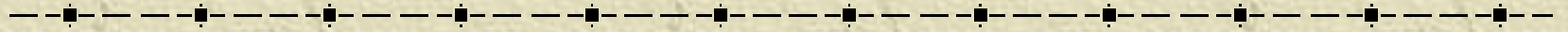
✦ obs. Appendicit, obs. galdestenspancreatit

Case 18*



✦ Diagnose?

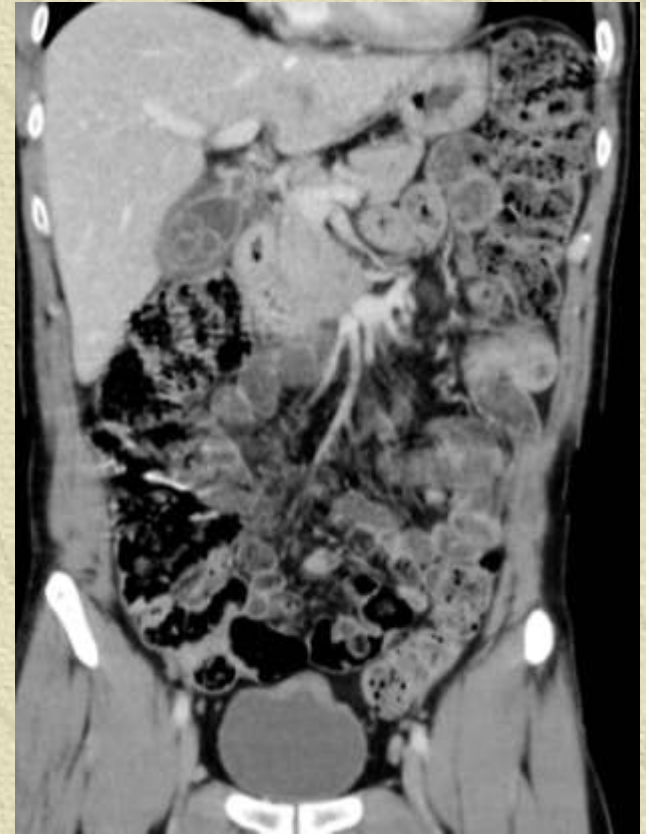
Case 19



✦ 41-årig mand

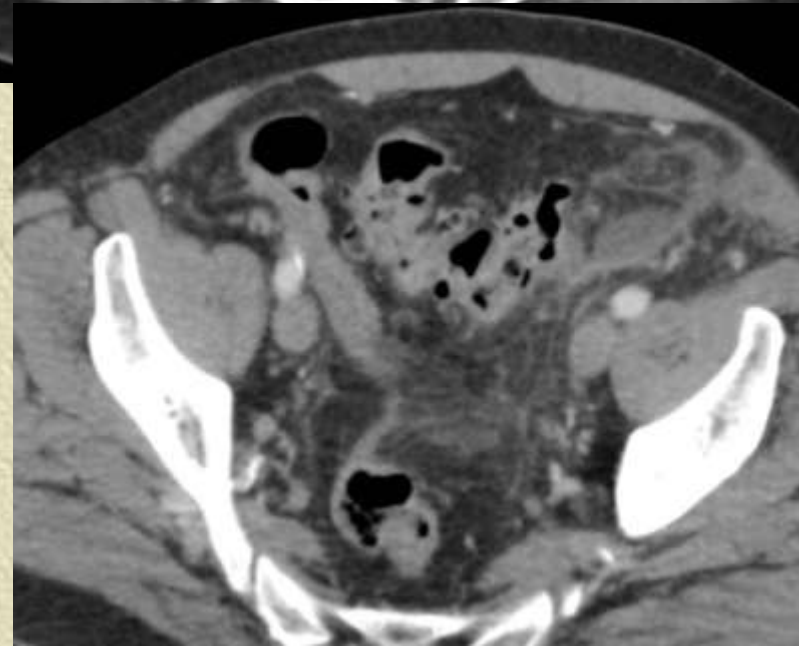
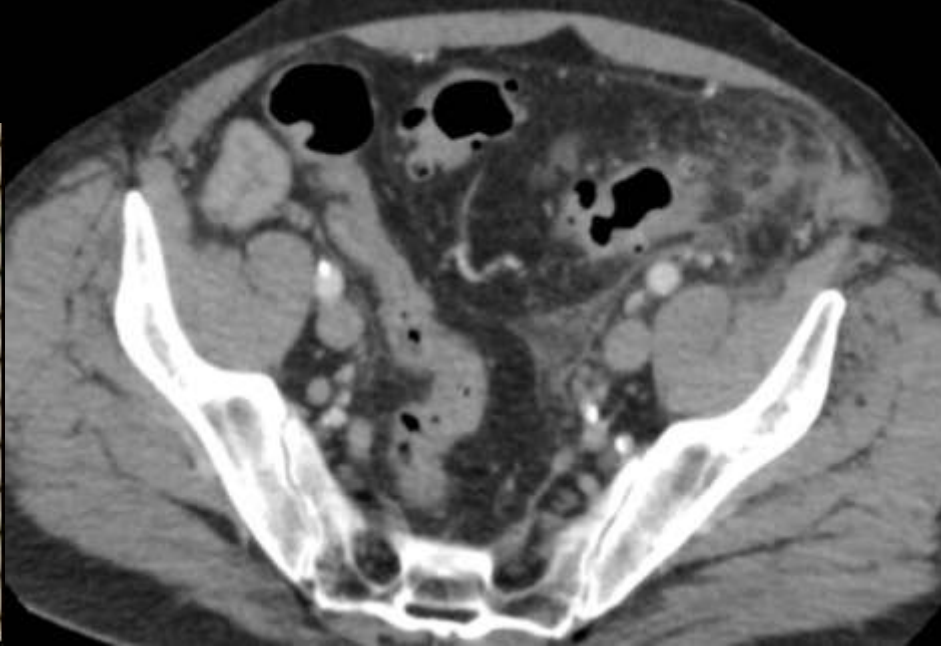
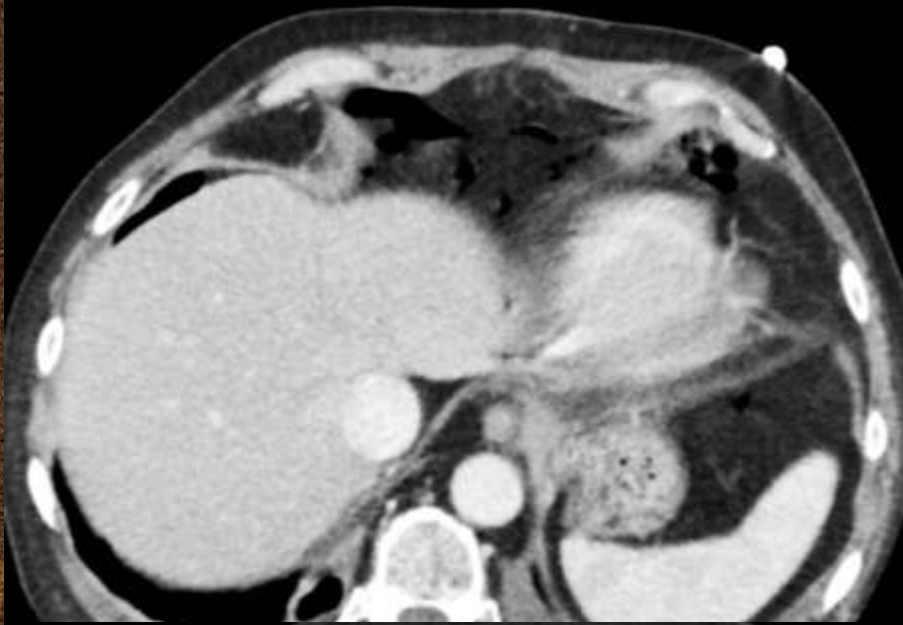
✦ Symptomer?

Case 19



✦ Diagnose?

Case 20* akut abdomen, fund?



Case 21*

✦ 35-årig kvinde

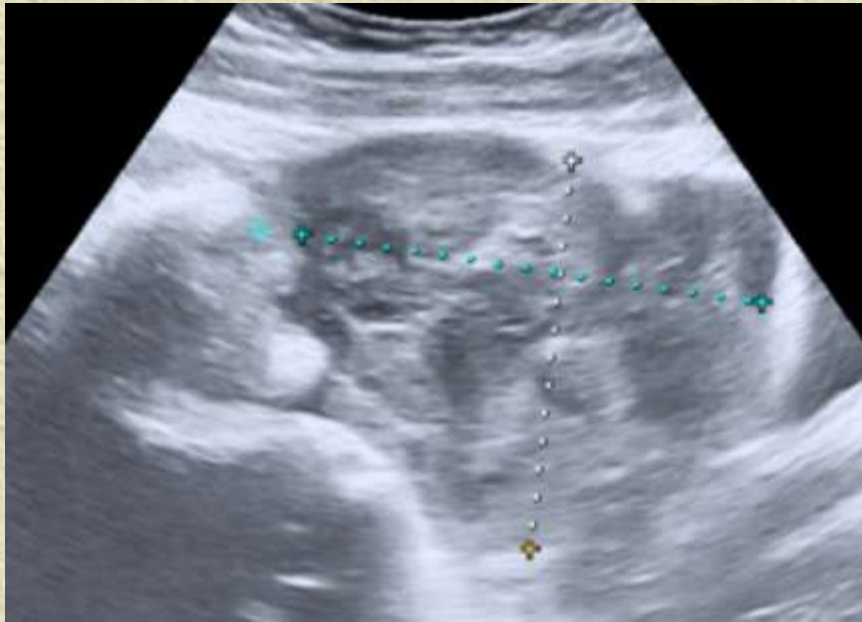
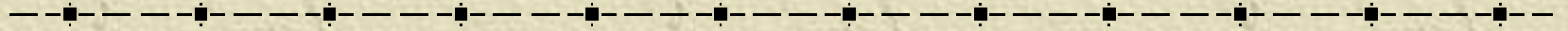
✦ Hø. sidige abdominal-smerter

- ◆ UL-oplæg: obs. galdesten

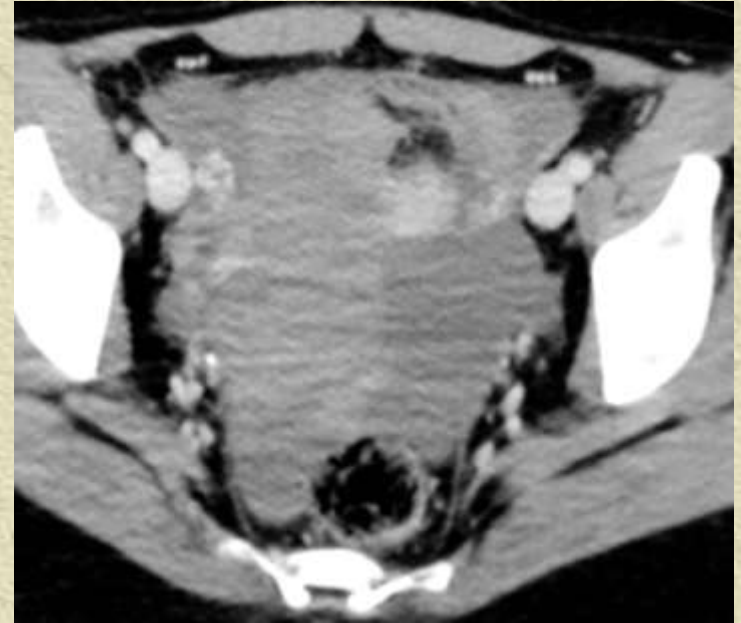
- ◆ UL-fund: 8 cm stor proces i hø. side af lille bækken

✦ Går videre til CT-skanning

Case 21*



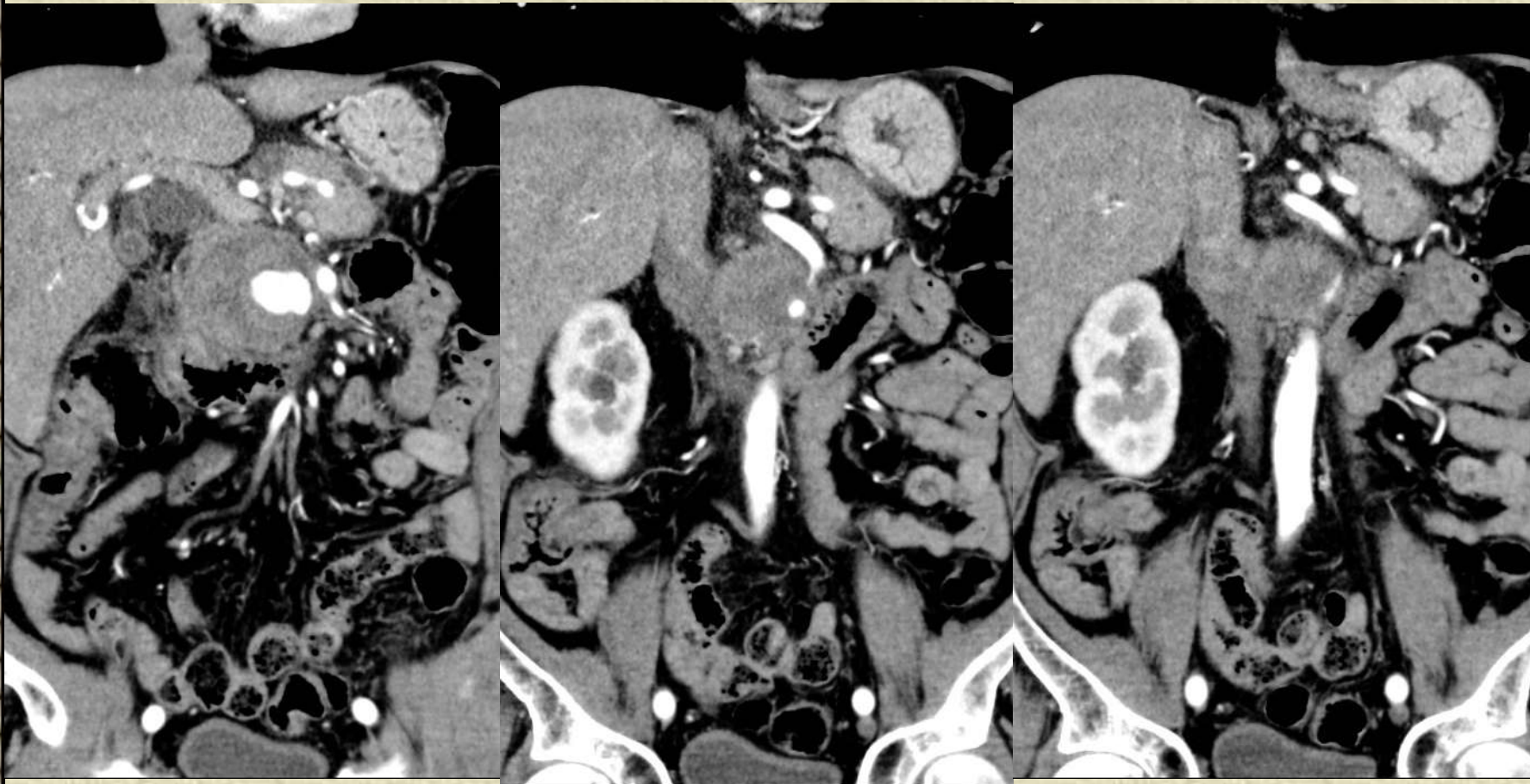
Case 21*



✦ ???? ???? ???? ???? ???? ?

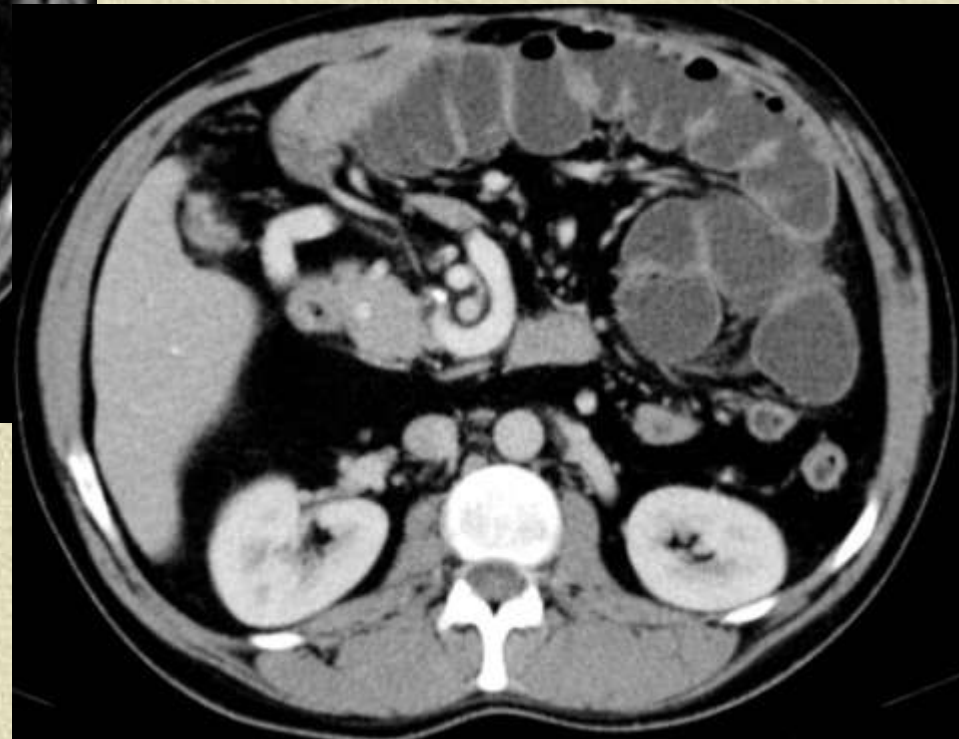
Case 22*

Pt. med polycytæmi og stigende levertal, ved UL ses
aortaaneurysme , hvad viser CT?

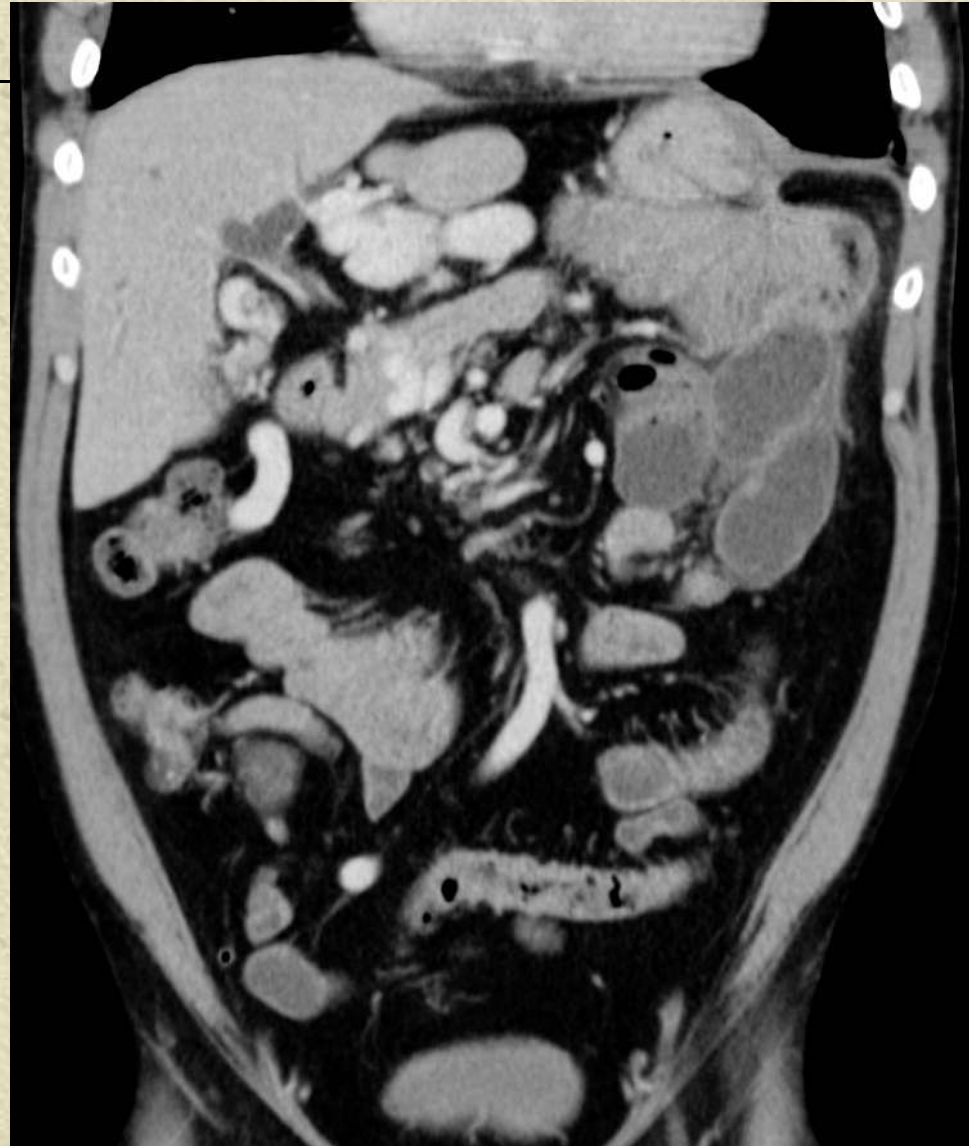


Case 23*

Ung mand med tidl. portalthrombose og splenektomi,
nu subileustilfælde, årsag?



Case 23*



Case 24

Pt. med pharynx cancer og septisk shock, stigende blæretryk og blålig misfarvning af flanker, årsag?

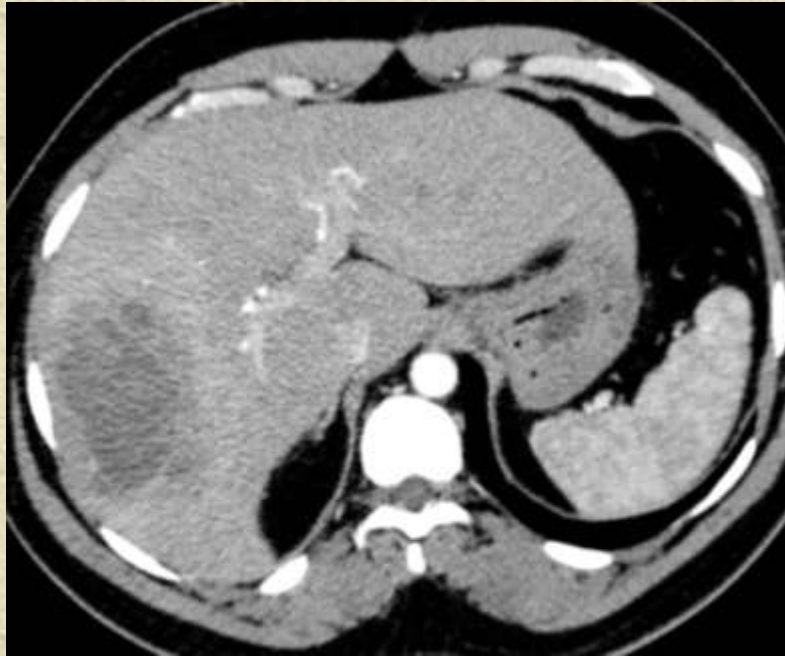


Case 25

✦ 44-årig mand

✦ Uspecifikke hø.sidige abdominal-
symptomer

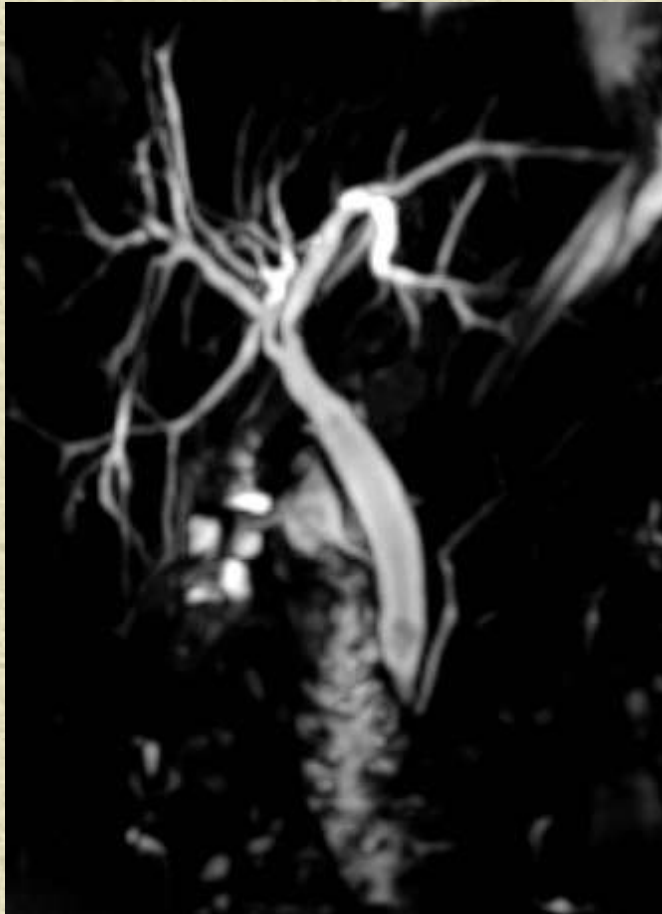
Case 25



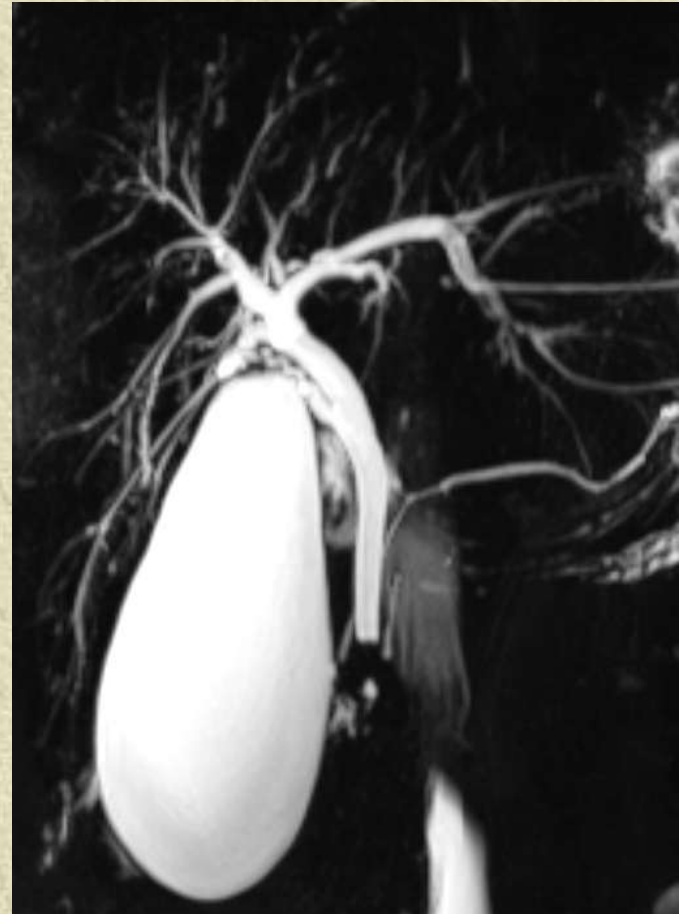
✦ Beskriv dine fund og diagnostiske overvejelser

Case 26, 2 patienter

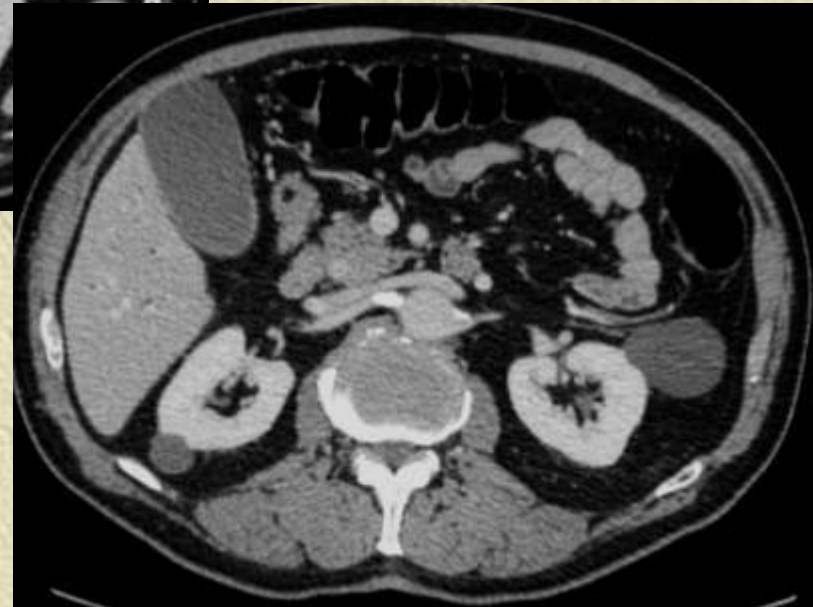
Kvinde, tidl
cholecystektomi,
nu forhøjede levertal
gn. 1/2 år, årsag?



Yngre kvinde med
autoimmun hepatitis,
nu stigende basisk
phosphatase, årsag?

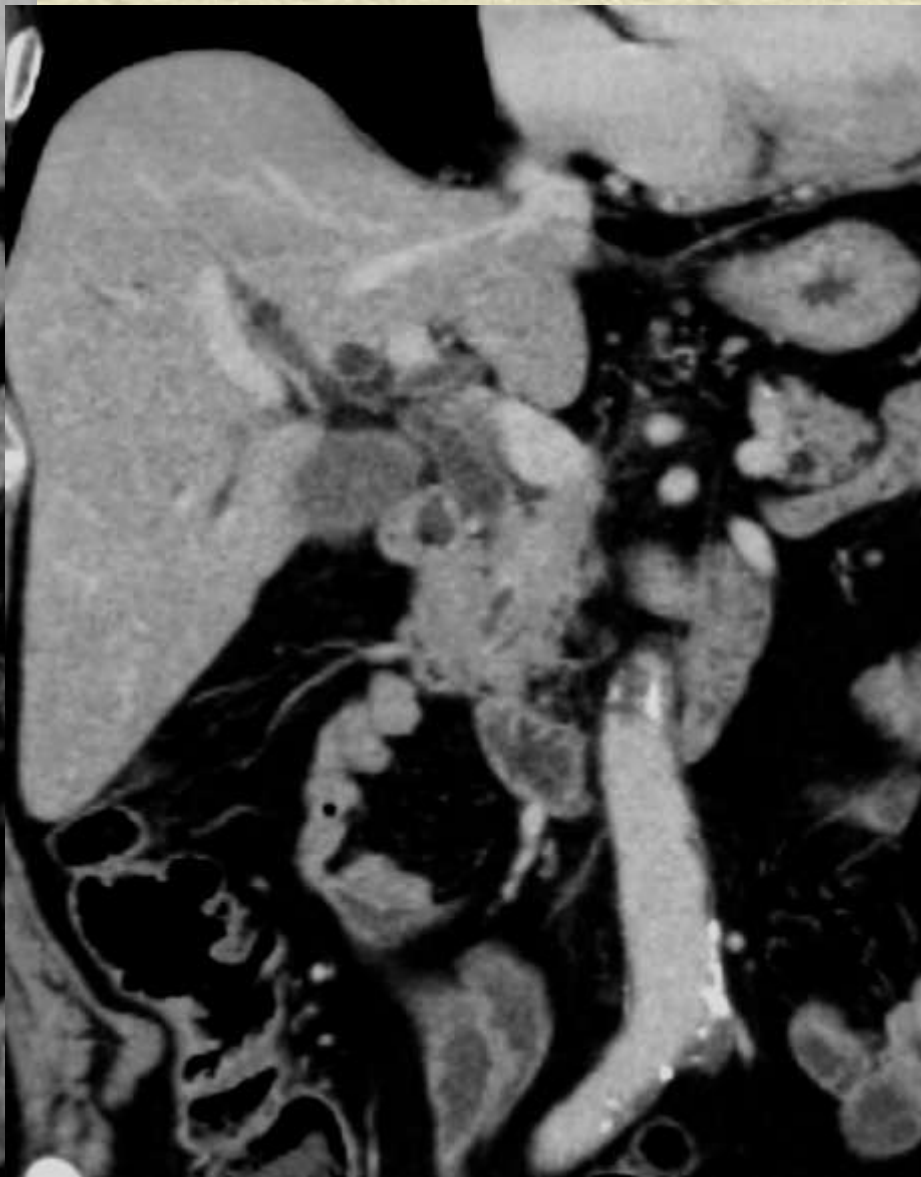
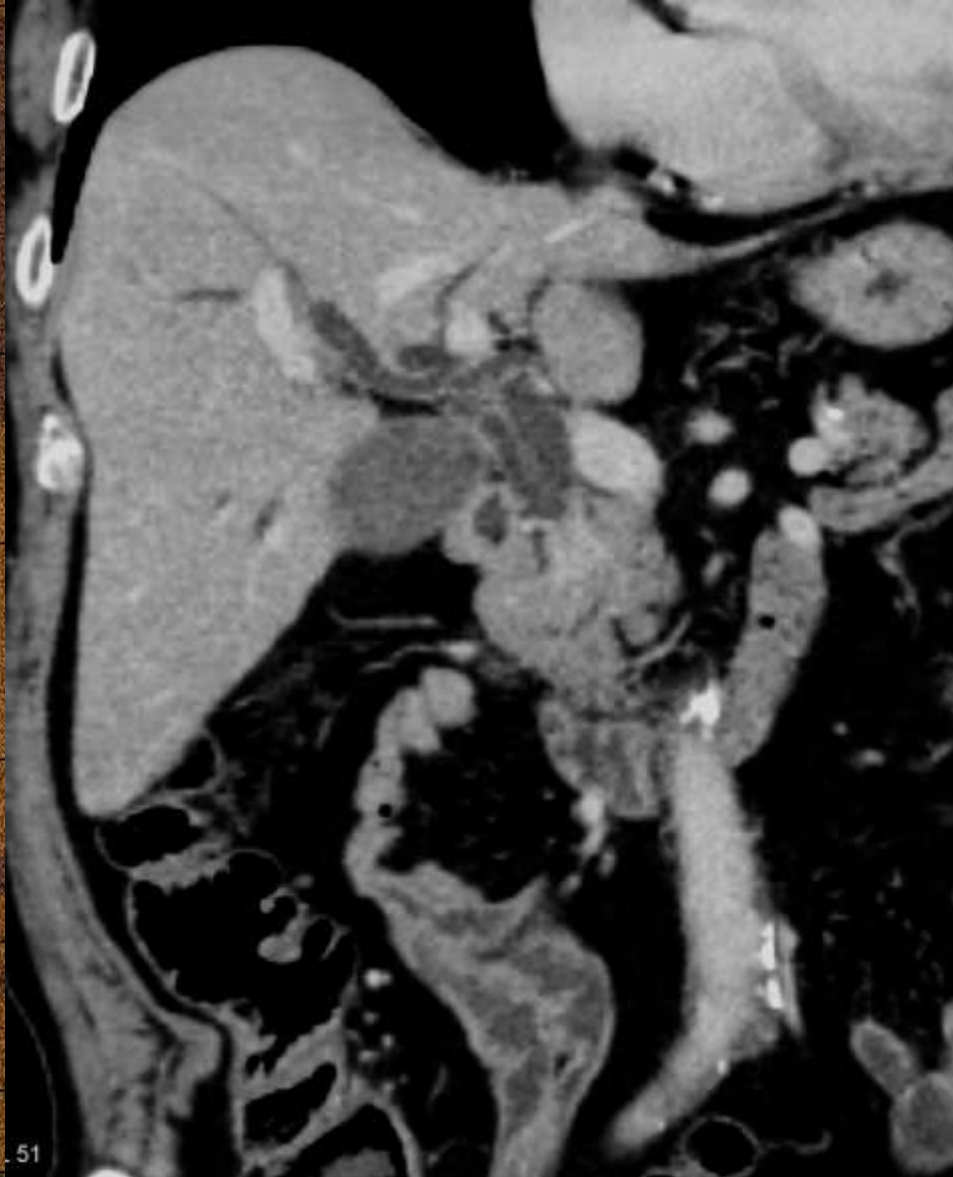


Case 27

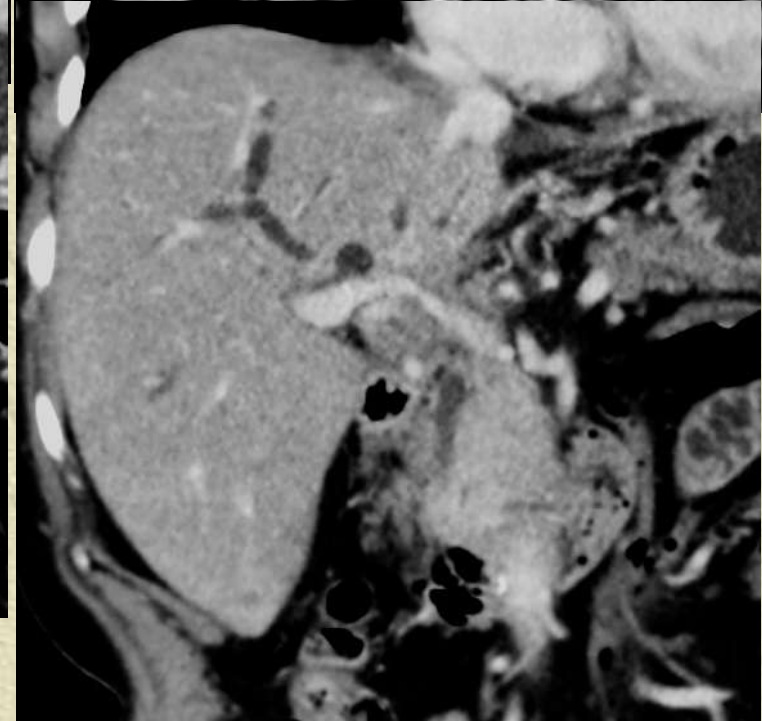
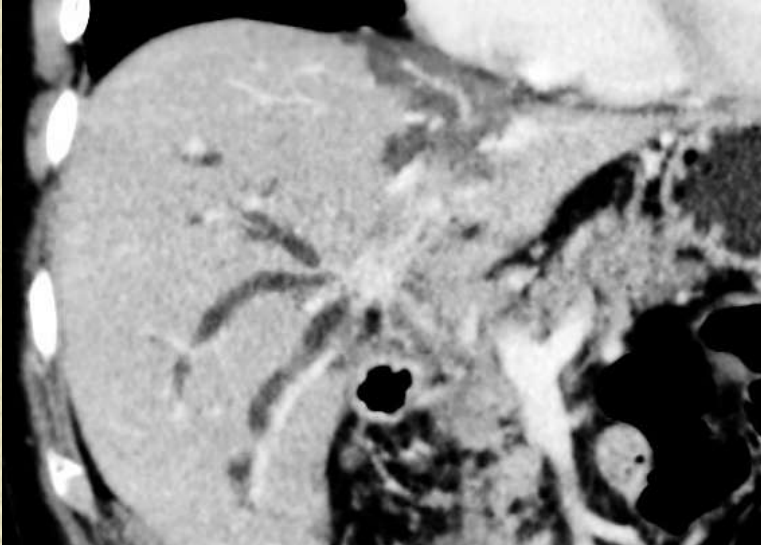
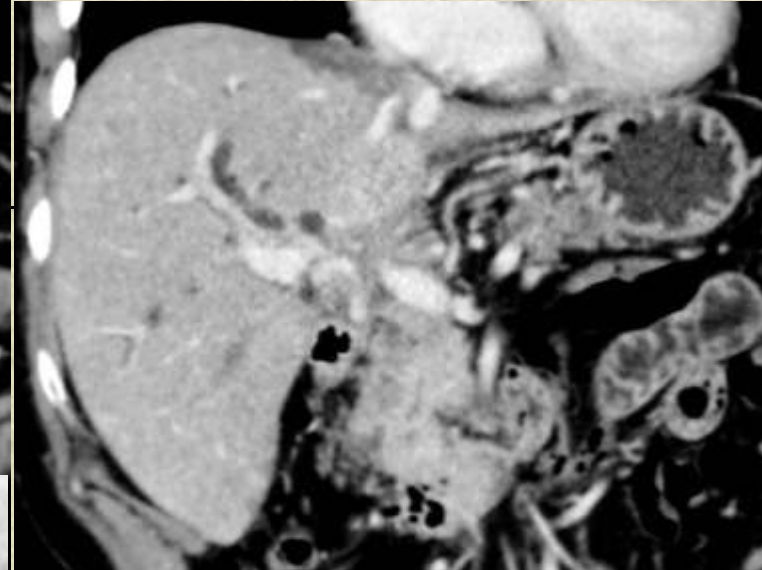
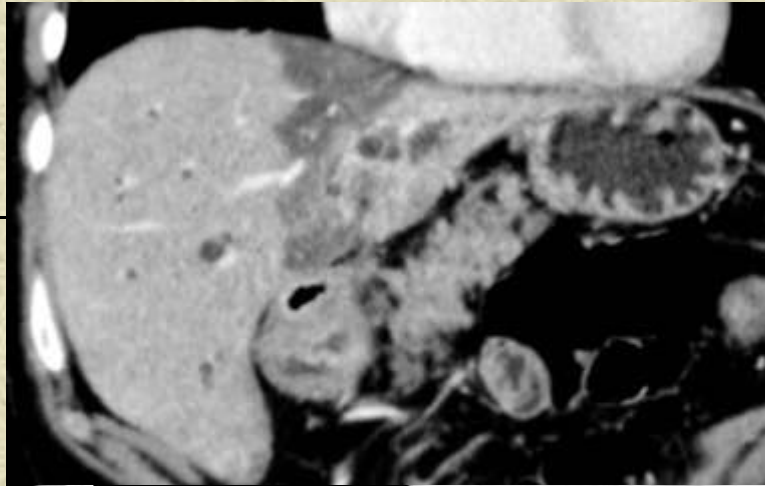


65 årig mand med ikterus.
Hvor sidder obstruktionen?
Differentialdiagnoser?

Case 27 Coronale bill.



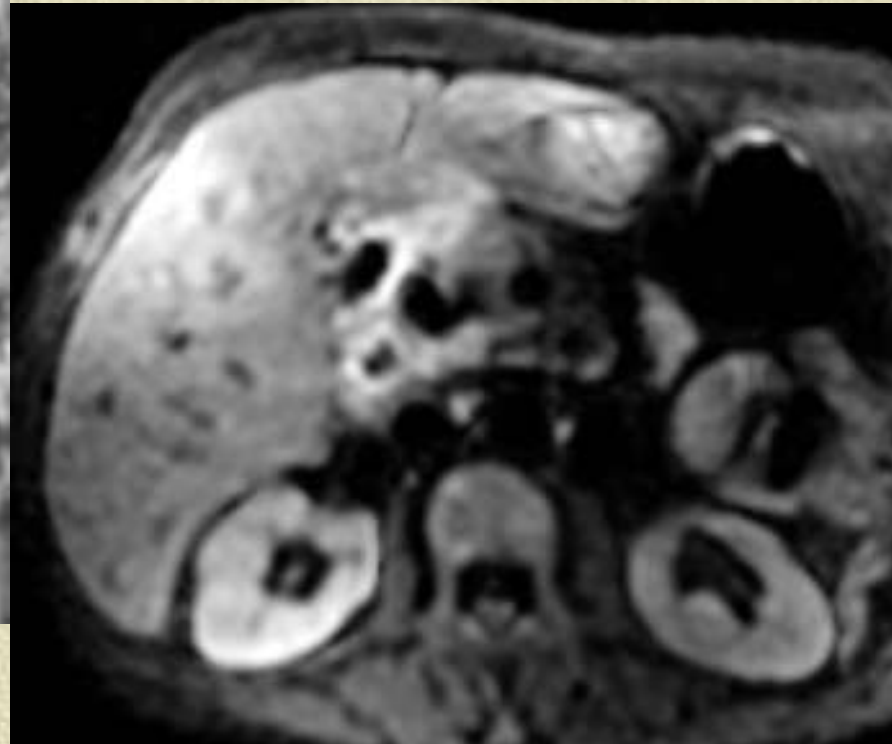
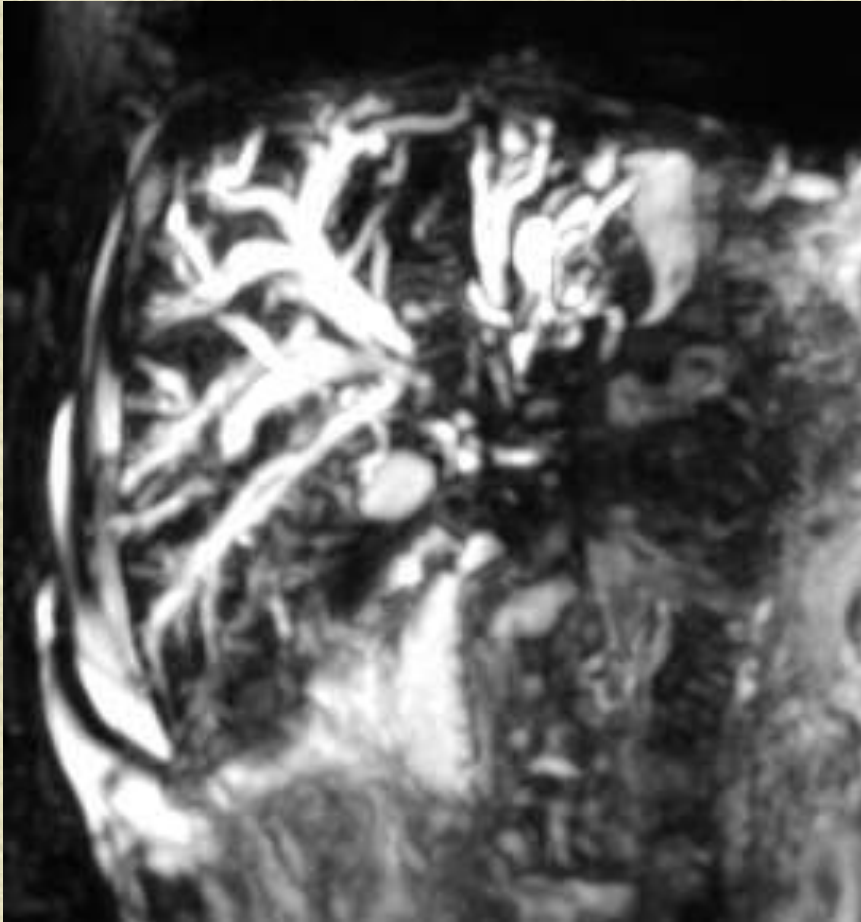
Case 28



72 årig kvinde med ikterus.
Hvor sidder obstruktionen?
Differentialdiagnoser?

Case 29

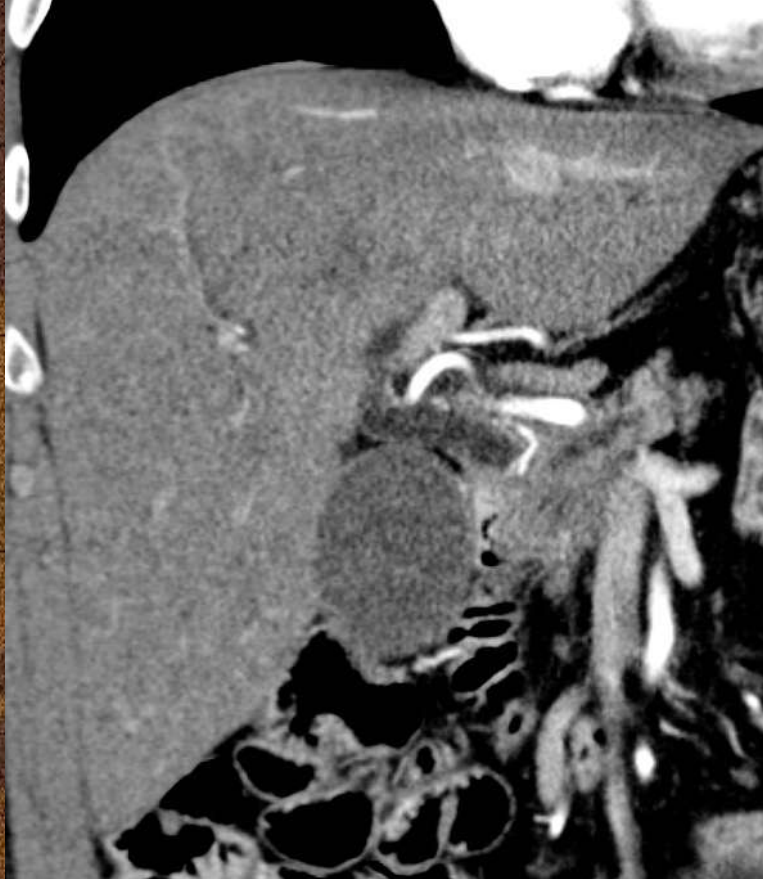
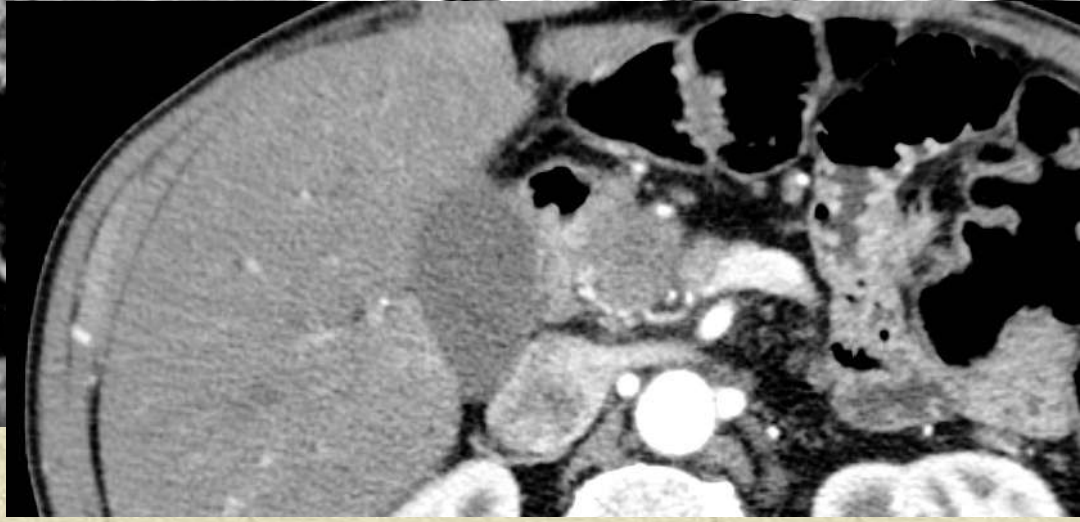
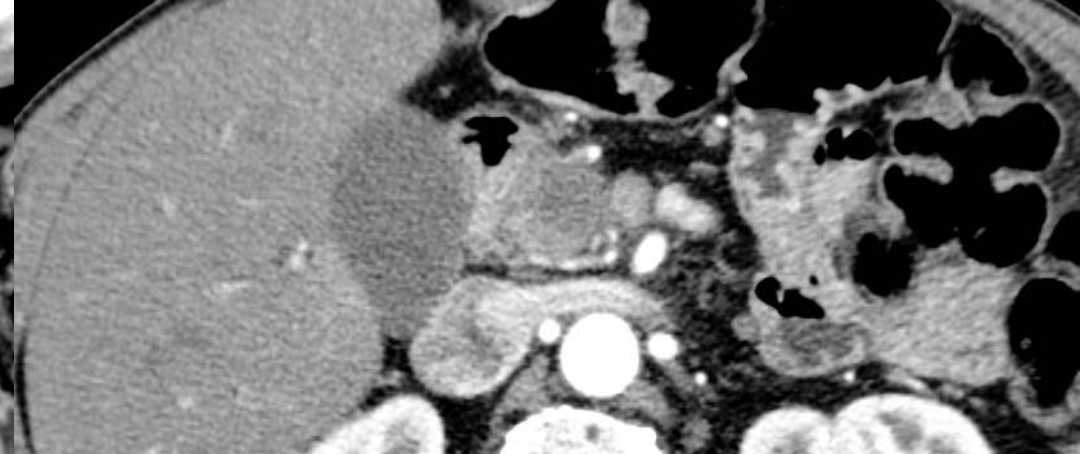
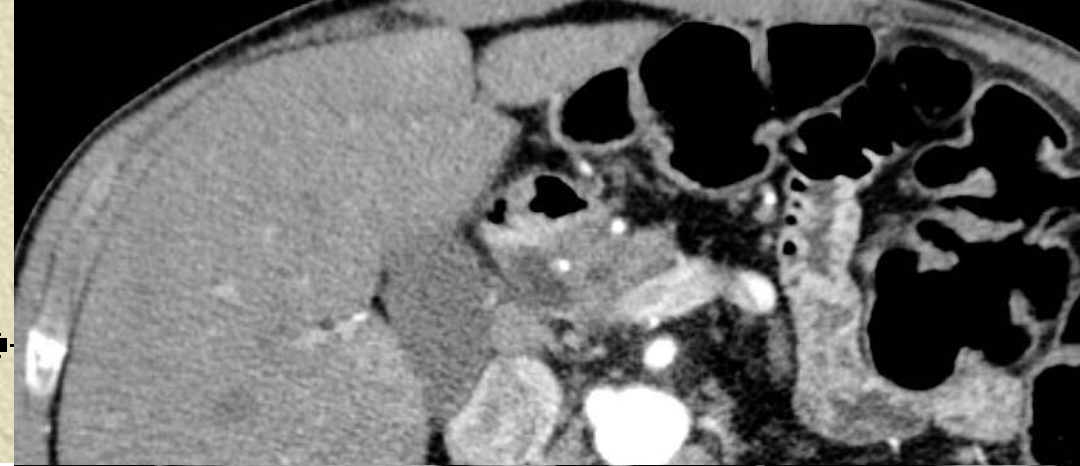
Samme pt. 1½ år senere, MRCP og diffusion, diagnose?



Case 30A*

60 årig mand med ikterus,
årsag?

Hvilken kontrastfase?



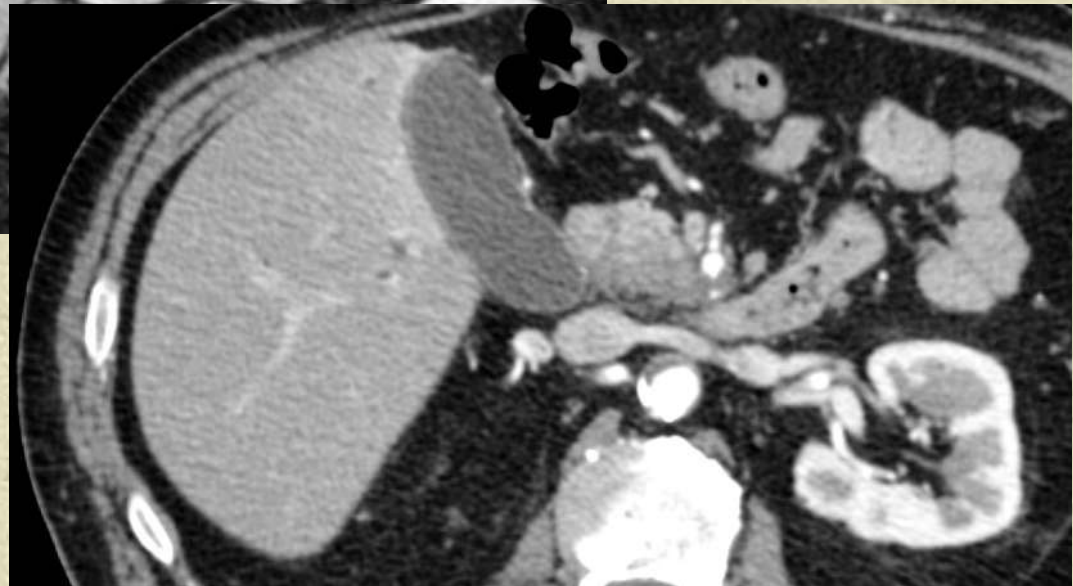
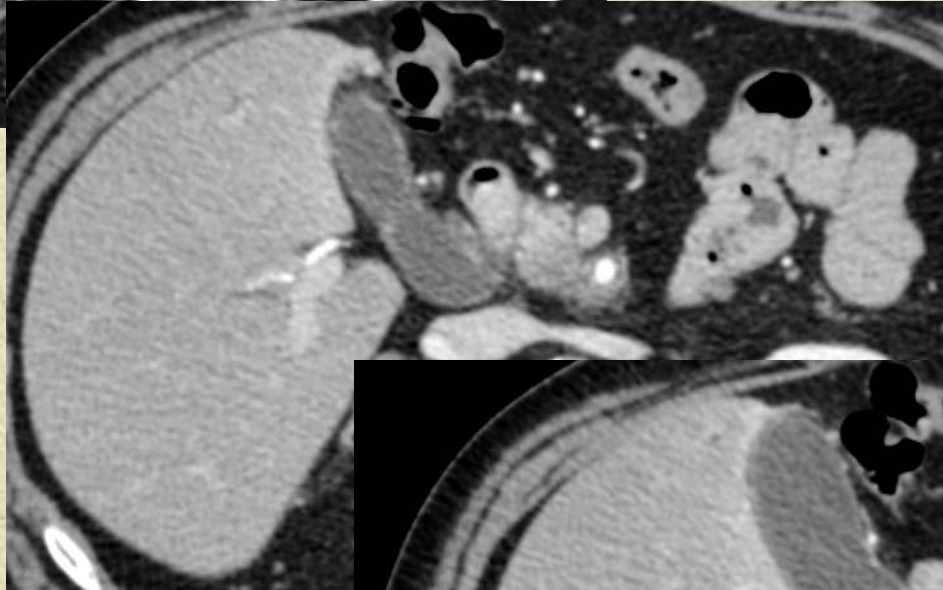
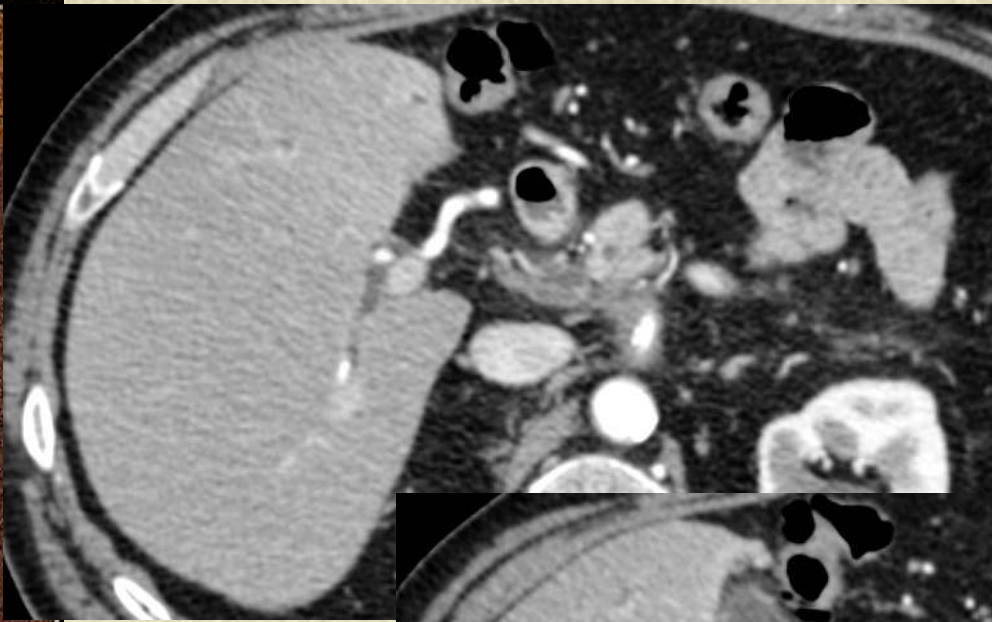
Case 30A



Hvilken kontrastfase?
Giver denne fase flere
oplysninger?



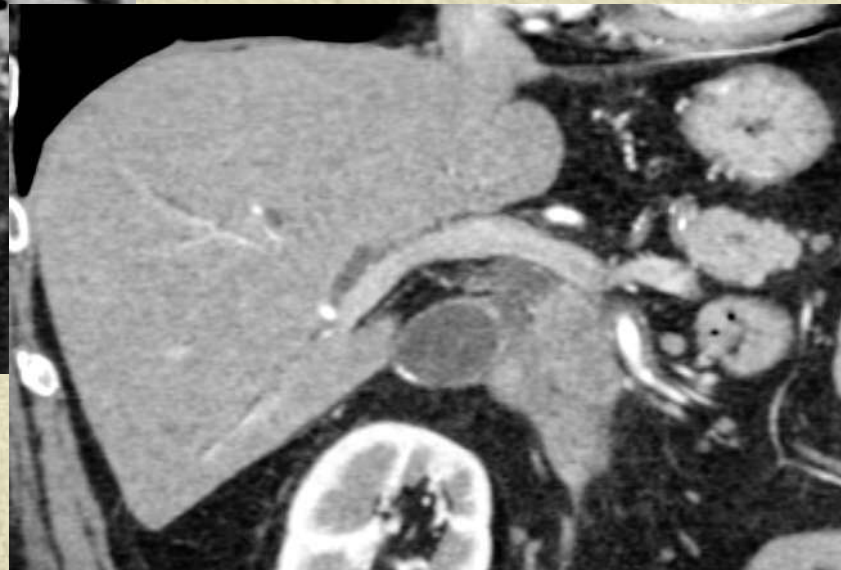
Case 30B



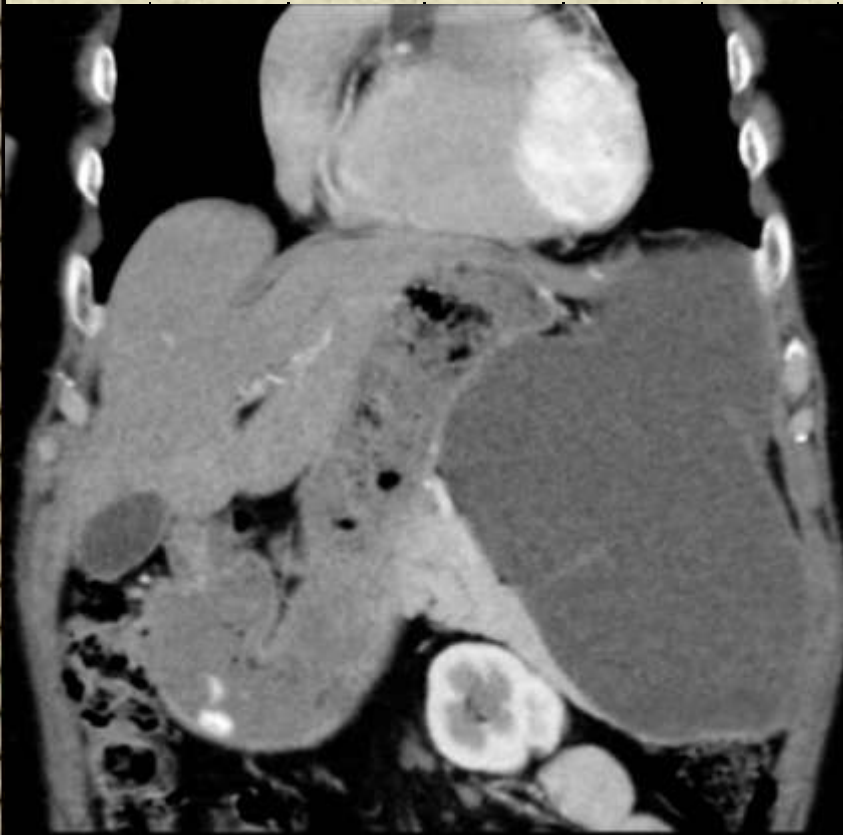
En anden pt.
malignitetsudredning
Er der tumor?
Hvis ja, så hvor?

Case 30B

coronale billeder



Case 31

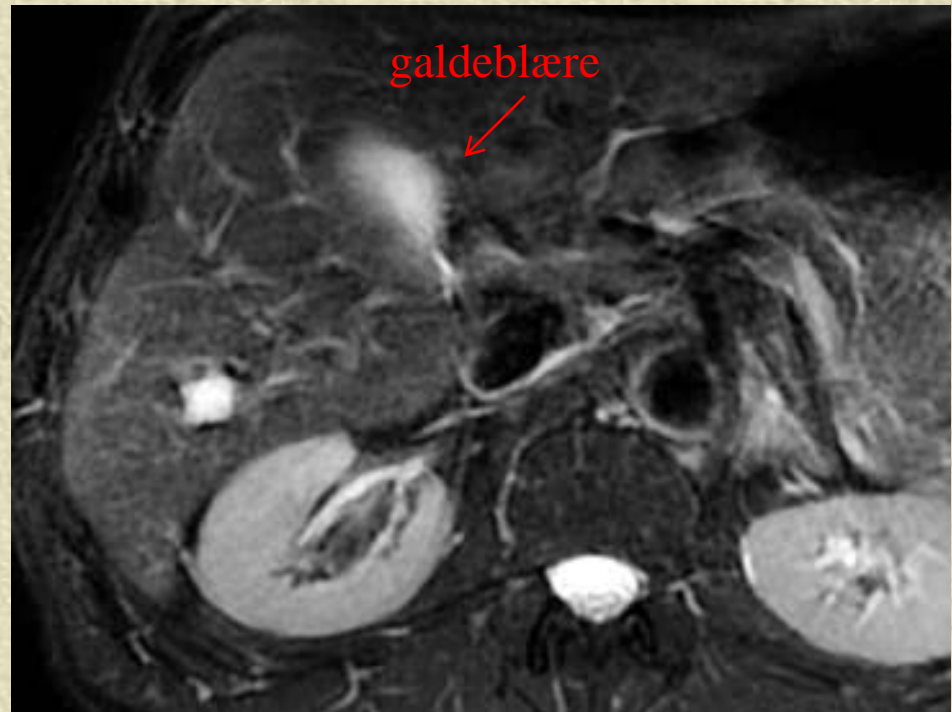
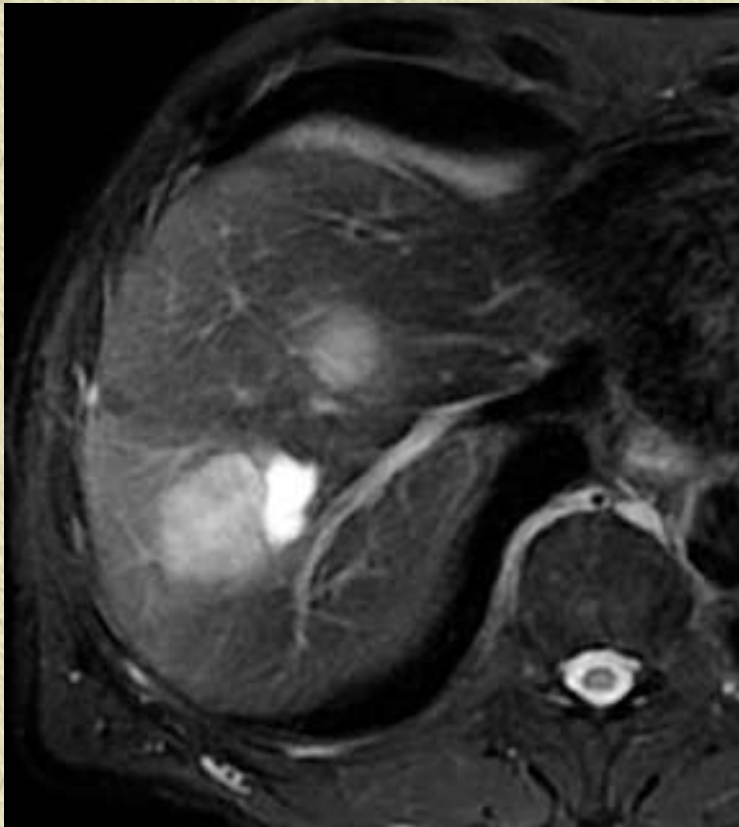


Ældre kvinde, i 7 år kendt med cyste, tolket som pseudocyste, hvad tror du?

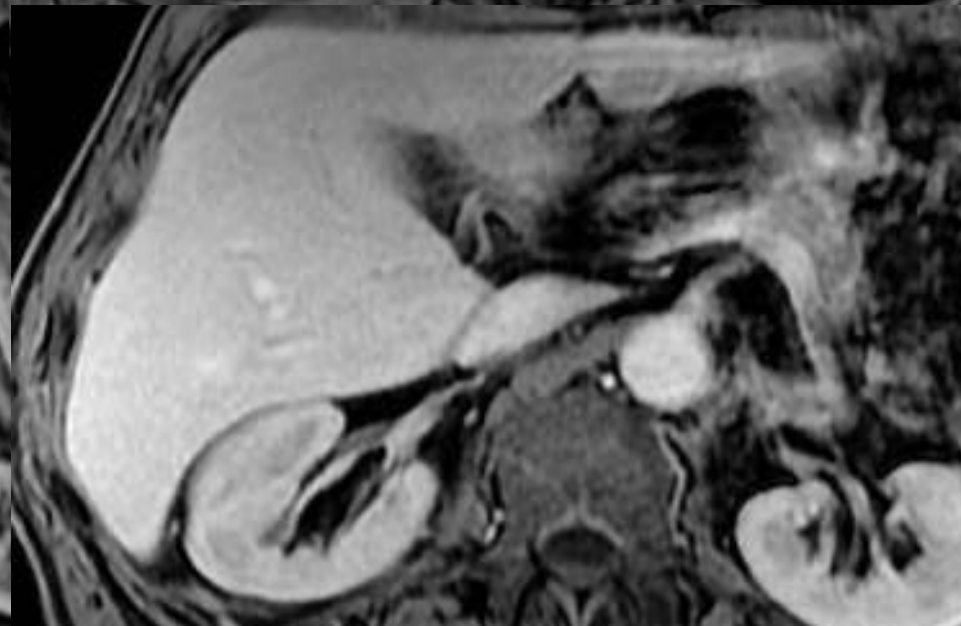
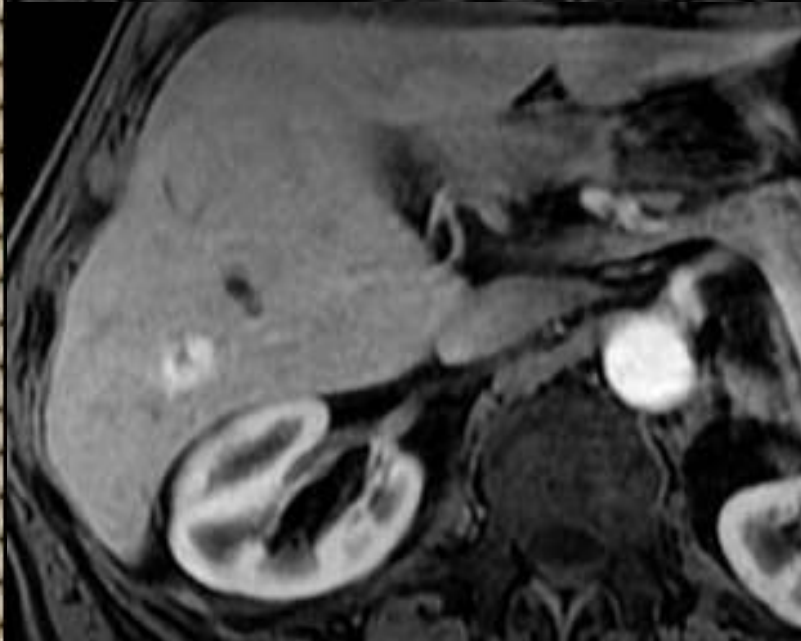
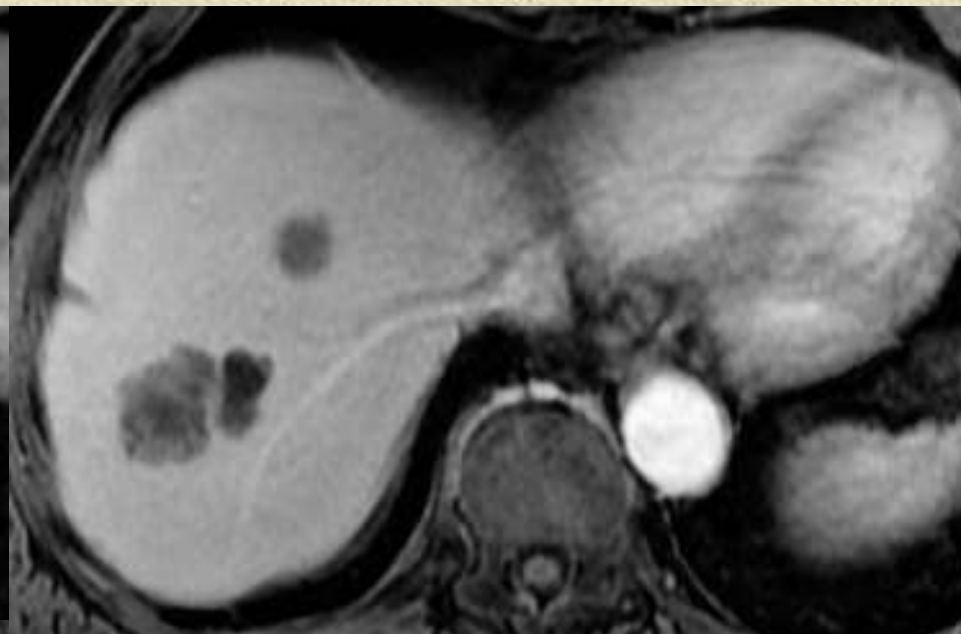
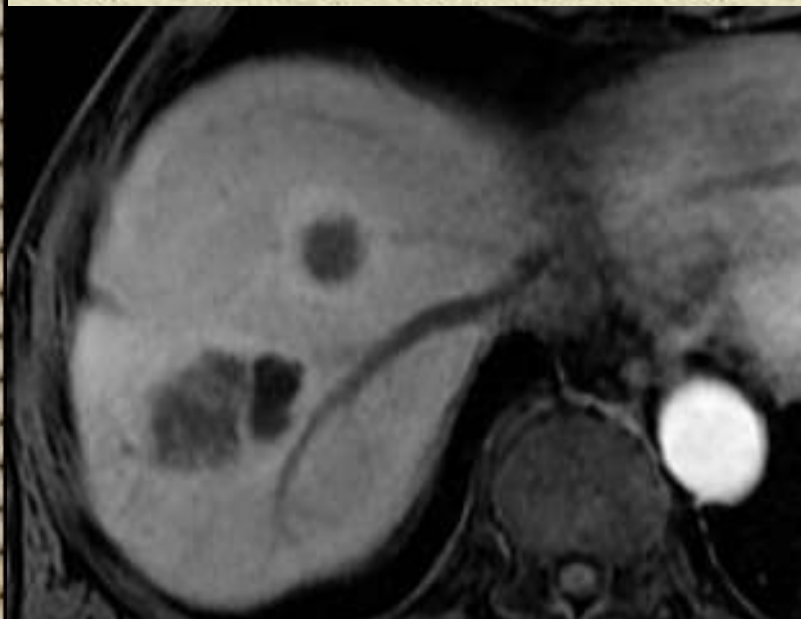


Case 32

Patient med tidl. coloncancer. Er der levermetastaser? Hvis ja, hvor mange?

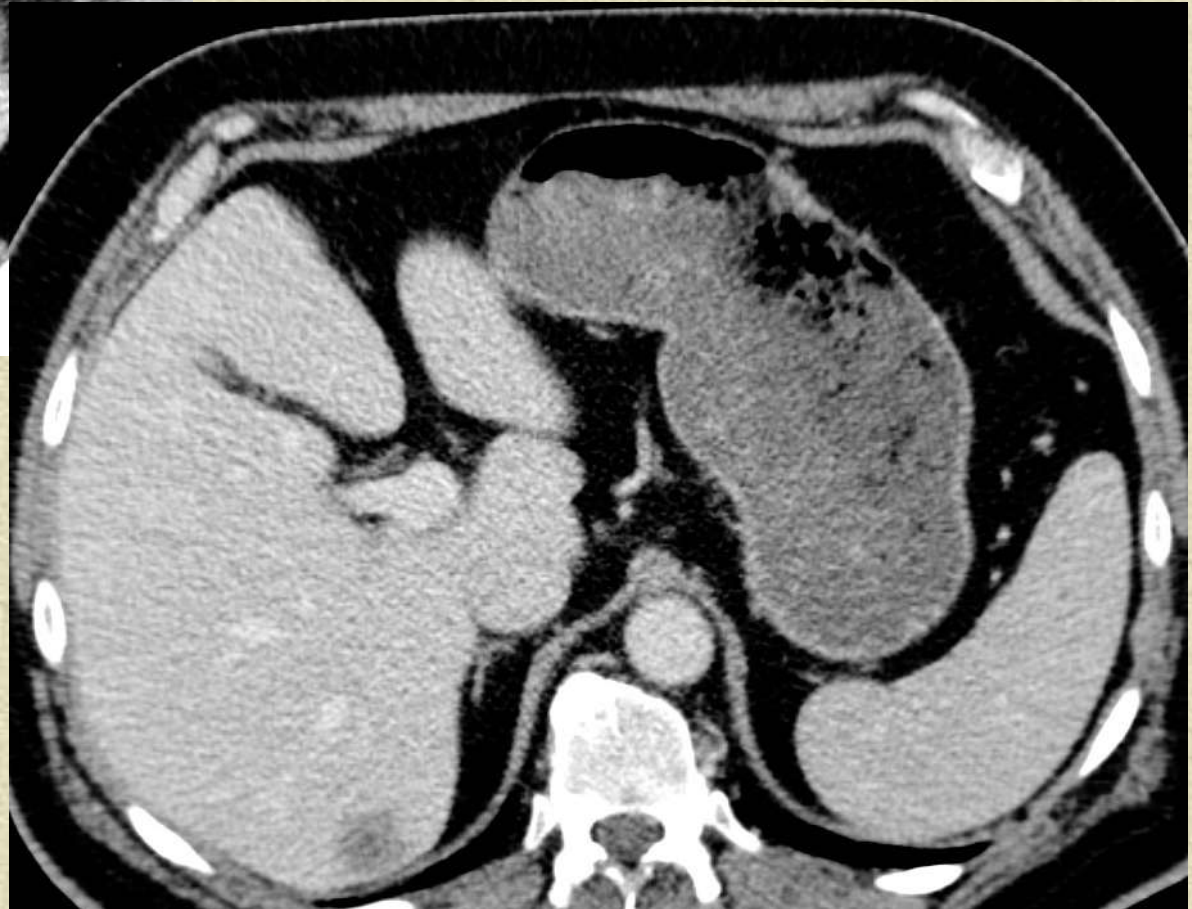
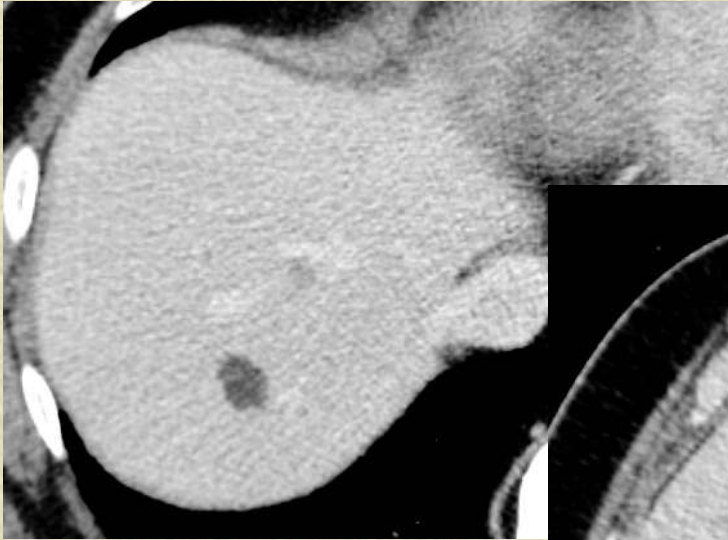


Case 32

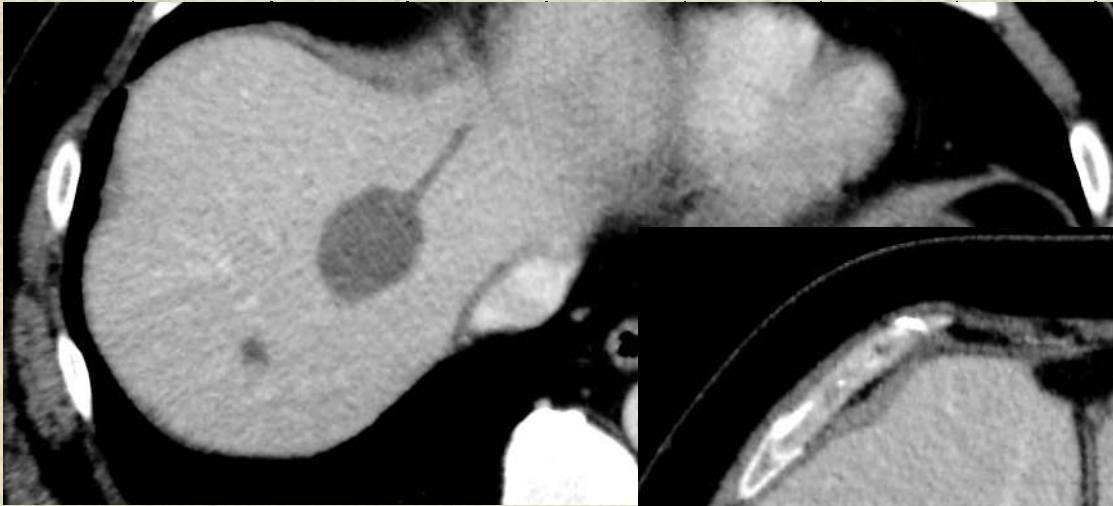


Case 33

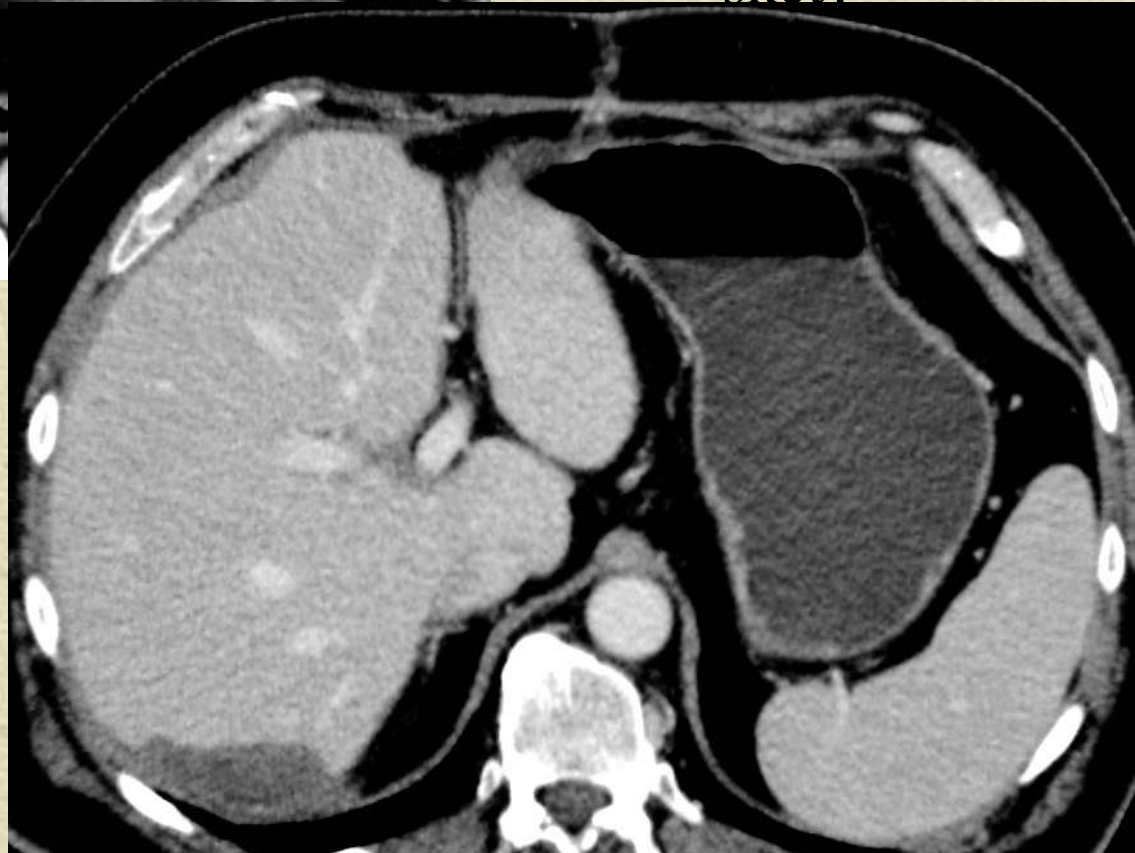
Patient med coloncancer
og hvad? i leveren



Case 33

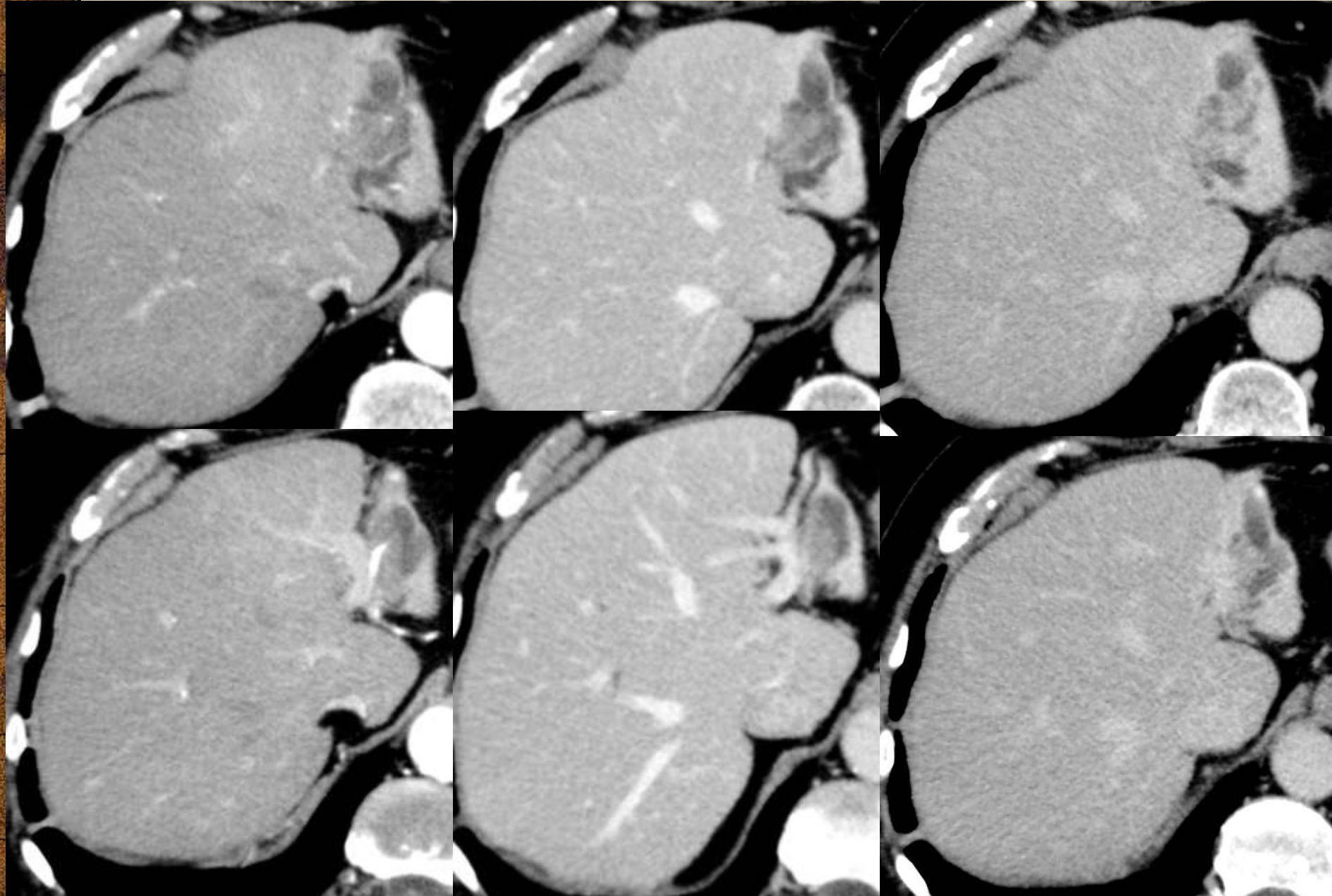


Samme pt. 3 mdr.
efter, hvad er der
sket?

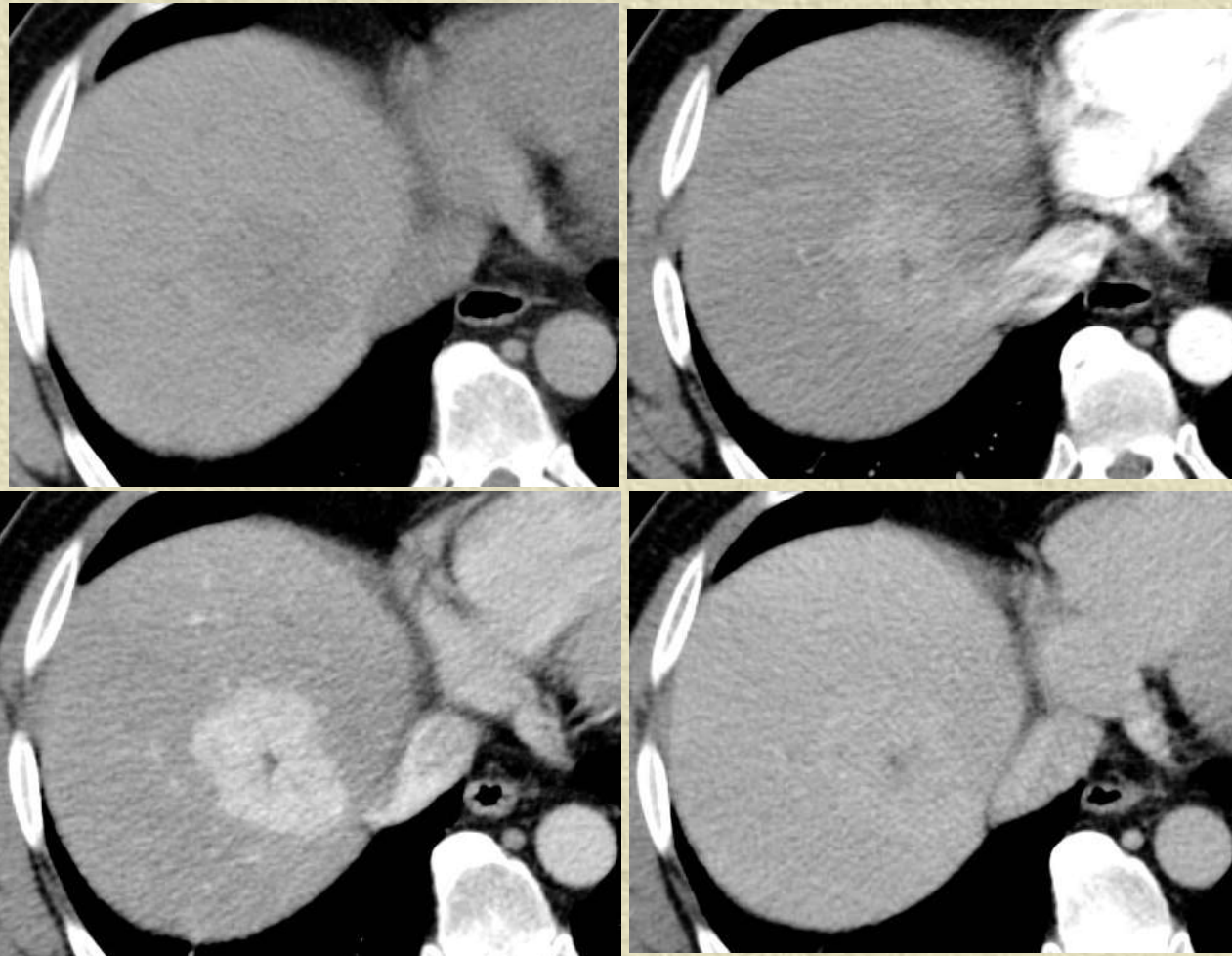


Case 34

Proces i leveren, hvad kan det være?
Hvilke 3 faser er der skannet i?



Case 35



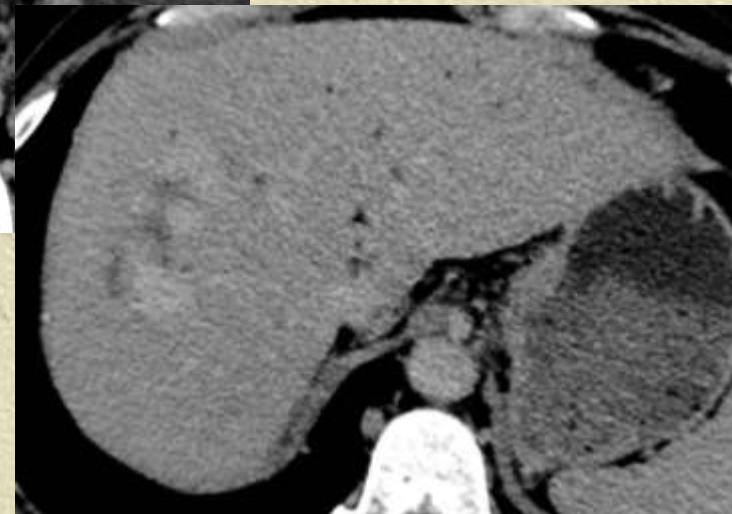
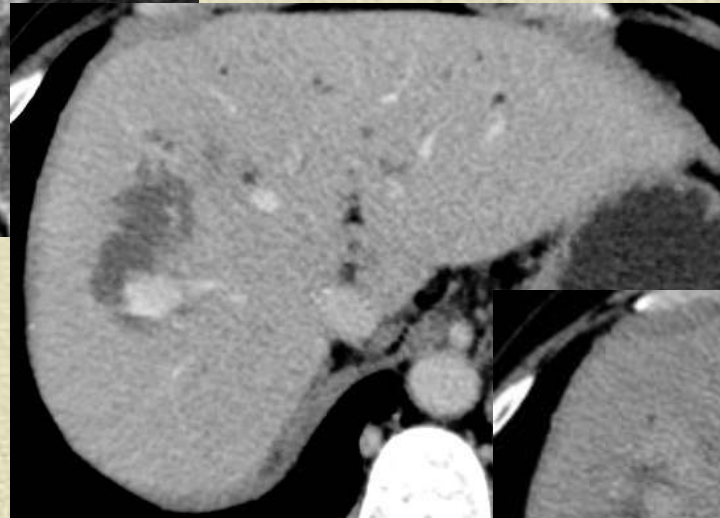
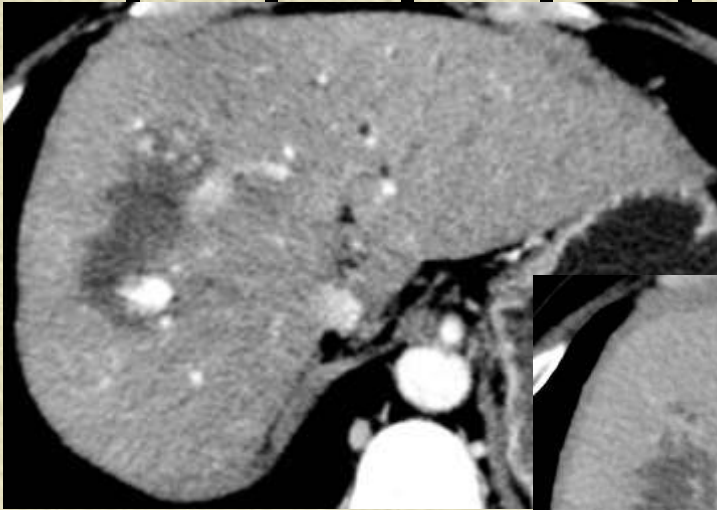
Leverproces i
4 faser.

Hvornår lader
den op?

Hvordan
lader den op?

Hvad er det?

Case 36

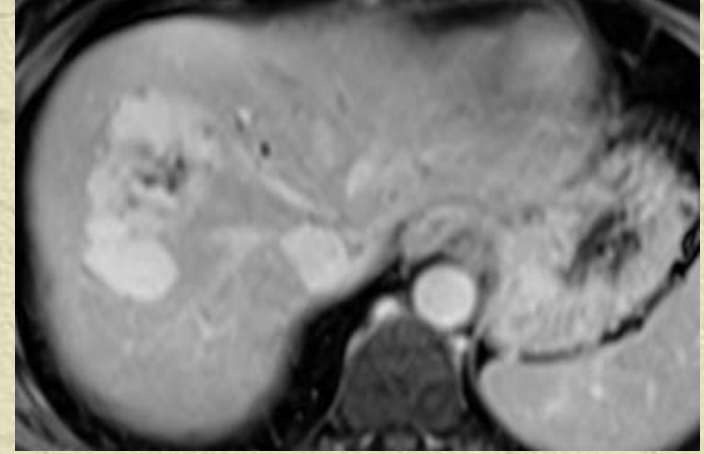
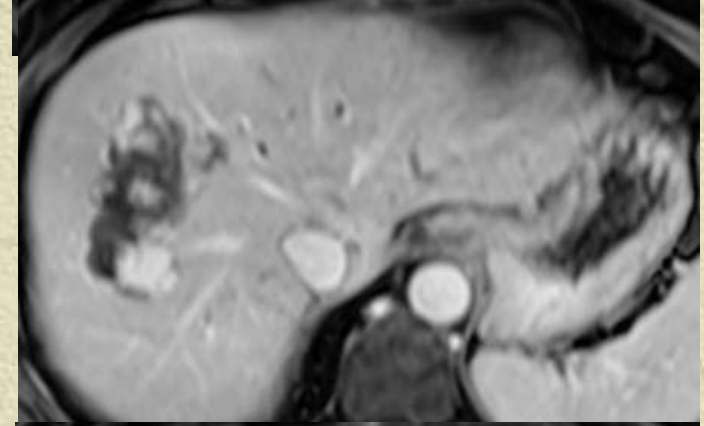
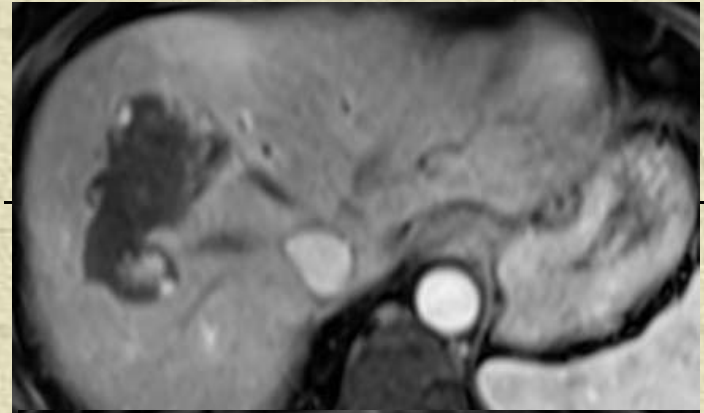
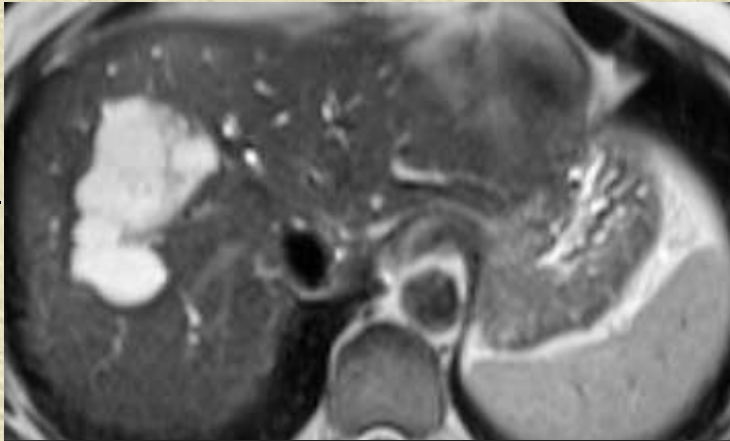


50 årig kvinde. UL
pga øvre abd.smerter
viser proces i lever,
obs hæmangiom,
men usikkert.

CT fund?

Behov for flere us.?

Case 36, MR



Case 37



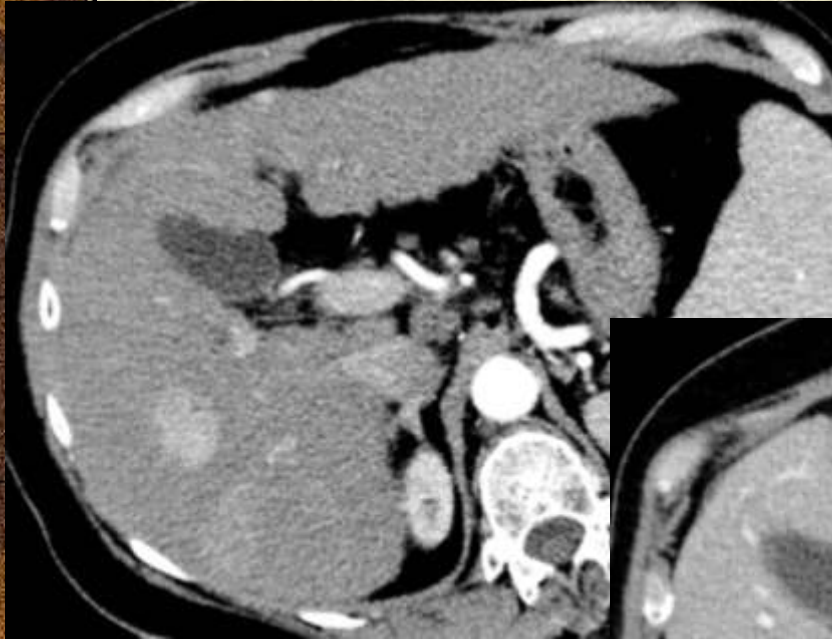
Leverproces i 3faser

Er der mere end en?

Hvad kan det være?

Er leveren i øvrigt normal?

Case 38



Leverproces i 3faser

Er der mere end en?

Hvad kan det være?

Er leveren i øvrigt normal?